

Anti-DUSP3 antibody (C-Term) (STJ96593)

STJ96593

GENERAL INFORMATION

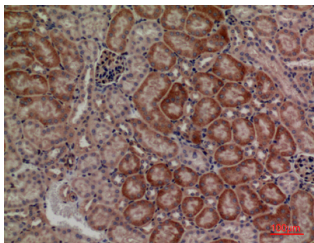
Product Type	Primary antibodies
Short Description	Rabbit polyclonal antibody anti-Dual Specificity Protein Phosphatase 3 (C-Term) is suitable for use in Western Blot, Immunohistochemistry, Immunofluorescence and ELISA research applications.
Applications	WB, IHC-P, IF-P, ELISA
Host/Source	Rabbit
Reactivity	Human, Mouse, Rat

PRODUCT PROPERTIES

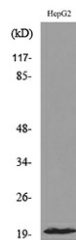
Clonality	Polyclonal
Clone ID	
Concentration	1 mg/mL
Conjugation	Unconjugated
Purification	The antibody was affinity-purified from rabbit anti-serum by affinity-chromatography.
Dilution Range	WB 1:500-1:2000 IHC 1:100-300 ELISA 1:20000
Formulation	PBS, 50% Glycerol, 0.5% BSA and 0.02% Sodium Azide.
Isotype	IgG
Storage Instruction	Store at -20°C for up to 1 year from the date of receipt, and avoid repeat freeze-thaw cycles.

TARGET INFORMATION

Gene ID	1845
Gene Symbol	DUSP3
Uniprot ID	DUS3_HUMAN
Immunogen	The antiserum was produced against synthesized peptide derived from the C-terminal region of human DUSP3 at amino acid range 136-185
Immunogen Region	C-Term
Specificity	DUSP3 polyclonal antibody (Dual Specificity Protein Phosphatase 3) binds to endogenous Dual Specificity Protein Phosphatase 3 at the amino acid region C-Term.
Immunogen Sequence	



Immunohistochemical analysis of paraffin-embedded mouse-kidney, antibody was diluted at 1:100



Western blot analysis of lysate from HepG2 cells, using DUSP3 Antibody.



Western blot analysis of HepG2 cells using VHR Polyclonal Antibody. Secondary antibody was diluted at 1:20000 cells nucleus extracted by Minute™ Cytoplasmic and Nuclear Fractionation kit (SC-003, InventiBiosci, MN, USA).

This product is suitable for in-vitro studies under the RESEARCH USE ONLY [RUO] licence. This product must not be used as for diagnostic or other medical purposes.
St John's Laboratory Ltd, Knowledge Dock Business Centre, University Way, London, E16 2RD | Tel: 0208 223 3081