

Anti-CYP11B1 antibody (61-110 N-Term) (STJ96589)

STJ96589

GENERAL INFORMATION

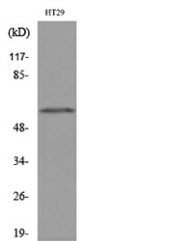
Product Type	Primary antibodies
Short Description	Rabbit polyclonal antibody anti-Cytochrome P450 11b1-Mitochondrial (61-110 N-Term) is suitable for use in Western Blot and ELISA research applications.
Applications	WB, ELISA
Host/Source	Rabbit
Reactivity	Human, Rat, Mouse

PRODUCT PROPERTIES

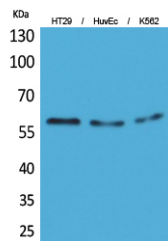
Clonality	Polyclonal
Clone ID	
Concentration	1 mg/mL
Conjugation	Unconjugated
Purification	The antibody was affinity-purified from rabbit anti-serum by affinity-chromatography.
Dilution Range	WB 1:500-1:2000 ELISA 1:20000
Formulation	PBS, 50% Glycerol, 0.5% BSA and 0.02% Sodium Azide.
Isotype	IgG
Storage	Store at -20°C for up to 1 year from the date of receipt, and avoid repeat freeze-thaw cycles.
Instruction	

TARGET INFORMATION

Gene ID	1584
Gene Symbol	CYP11B1
Uniprot ID	C11B1_HUMAN
Immunogen	The antiserum was produced against synthesized peptide derived from the N-terminal region of human CYP11B1/2 at amino acid range 61-110
Immunogen Region	61-110 N-Term
Specificity	CYP11B1 polyclonal antibody (Cytochrome P450 11b1-Mitochondrial) binds to endogenous Cytochrome P450 11b1-Mitochondrial at the amino acid region 61-110 N-Term.
Immunogen Sequence	



Western blot analysis of lysate from HT29 cells, using CYP11B1/2 Antibody.



Western blot analysis of HT29, HuvEc, K562 cells using CYP11B1/2 Polyclonal Antibody. Secondary antibody was diluted at 1:20000

This product is suitable for in-vitro studies under the RESEARCH USE ONLY [RUO] licence. This product must not be used as for diagnostic or other medical purposes.
St John's Laboratory Ltd, Knowledge Dock Business Centre, University Way, London, E16 2RD | Tel: 0208 223 3081