

Anti-ADM antibody (91-140 Internal) (STJ96567)

STJ96567

GENERAL INFORMATION

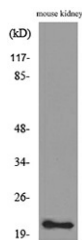
Product Type	Primary antibodies
Short Description	Rabbit polyclonal antibody anti-Pro-Adrenomedullin Cleaved Into-Adrenomedullin (91-140 Internal) is suitable for use in Western Blot, Immunohistochemistry, Immunofluorescence and ELISA research applications.
Applications	WB, IHC-P, IF-P, ELISA
Host/Source	Rabbit
Reactivity	Human, Rat

PRODUCT PROPERTIES

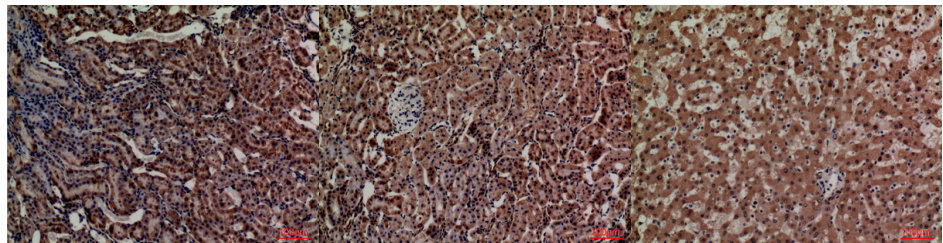
Clonality	Polyclonal
Clone ID	
Concentration	1 mg/mL
Conjugation	Unconjugated
Purification	The antibody was affinity-purified from rabbit anti-serum by affinity-chromatography.
Dilution Range	WB 1:500-1:2000 IHC 1:100-300 ELISA 1:20000
Formulation	PBS, 50% Glycerol, 0.5% BSA and 0.02% Sodium Azide.
Isotype	IgG
Storage Instruction	Store at -20°C for up to 1 year from the date of receipt, and avoid repeat freeze-thaw cycles.

TARGET INFORMATION

Gene ID	133
Gene Symbol	ADM
Uniprot ID	ADML_HUMAN
Immunogen	The antiserum was produced against synthesized peptide derived from the Internal region of human ADM at amino acid range 101-150
Immunogen Region	91-140 Internal
Specificity	ADM polyclonal antibody (Pro-Adrenomedullin Cleaved Into-Adrenomedullin) binds to endogenous Pro-Adrenomedullin Cleaved Into-Adrenomedullin at the amino acid region 91-140 Internal.
Immunogen Sequence	



Western blot analysis of lysate from mouse kidney cells, using ADM Antibody.



Immunohistochemical analysis of paraffin-embedded rat-kidney, antibody was diluted at 1:100

Immunohistochemical analysis of paraffin-embedded rat-kidney, antibody was diluted at 1:100

Immunohistochemical analysis of paraffin-embedded human-liver, antibody was diluted at 1:100

This product is suitable for in-vitro studies under the RESEARCH USE ONLY [RUO] licence. This product must not be used as for diagnostic or other medical purposes.
St John's Laboratory Ltd, Knowledge Dock Business Centre, University Way, London, E16 2RD | Tel: 0208 223 3081