

## Anti-CDK4 antibody (1-50 N-Term) (STJ96563)

STJ96563

### GENERAL INFORMATION

<b>Product Type</b>	Primary antibodies
<b>Short Description</b>	Rabbit polyclonal antibody anti-Cyclin-Dependent Kinase 4 (1-50 N-Term) is suitable for use in Immunofluorescence, Immunocytochemistry, Western Blot, Immunohistochemistry and ELISA research applications.
<b>Applications</b>	IF, ICC, WB, IHC-P, ELISA
<b>Host/Source</b>	Rabbit
<b>Reactivity</b>	Human, Mouse, Rat

### PRODUCT PROPERTIES

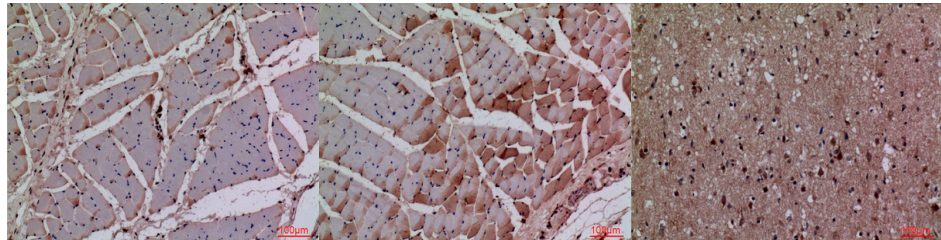
<b>Clonality</b>	Polyclonal
<b>Clone ID</b>	
<b>Concentration</b>	1 mg/mL
<b>Conjugation</b>	Unconjugated
<b>Purification</b>	The antibody was affinity-purified from rabbit anti-serum by affinity-chromatography.
<b>Dilution</b>	IF 1:50-200
<b>Range</b>	WB 1:500-1:2000 IHC 1:100-300 ELISA 1:20000
<b>Formulation</b>	PBS, 50% Glycerol, 0.5% BSA and 0.02% Sodium Azide.
<b>Isotype</b>	IgG
<b>Storage Instruction</b>	Store at -20°C for up to 1 year from the date of receipt, and avoid repeat freeze-thaw cycles.

### TARGET INFORMATION

<b>Gene ID</b>	1019
<b>Gene Symbol</b>	CDK4
<b>Uniprot ID</b>	CDK4_HUMAN
<b>Immunogen</b>	The antiserum was produced against synthesized peptide derived from the N-terminal region of human CDK4 at amino acid range 1-50
<b>Immunogen Region</b>	1-50 N-Term
<b>Specificity</b>	CDK4 polyclonal antibody (Cyclin-Dependent Kinase 4) binds to endogenous Cyclin-Dependent Kinase 4 at the amino acid region 1-50 N-Term.
<b>Immunogen Sequence</b>	



Western blot analysis of lysate from MCF7 cells, using CDK4 Antibody.



Immunohistochemical analysis of paraffin-embedded rat-muscle, antibody was diluted at 1:100

Immunohistochemical analysis of paraffin-embedded rat-muscle, antibody was diluted at 1:100

Immunohistochemical analysis of paraffin-embedded human-brain, antibody was diluted at 1:100

This product is suitable for in-vitro studies under the RESEARCH USE ONLY [RUO] licence. This product must not be used as for diagnostic or other medical purposes.  
St John's Laboratory Ltd, Knowledge Dock Business Centre, University Way, London, E16 2RD | Tel: 0208 223 3081