

Anti-PROM1 antibody (31-80 N-Term) (STJ96557)

STJ96557

GENERAL INFORMATION

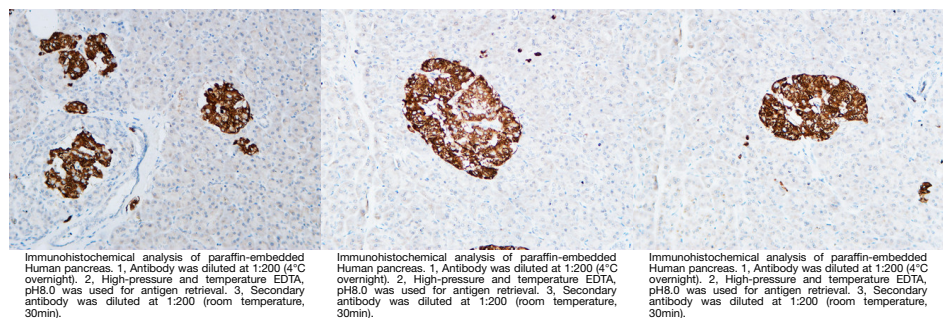
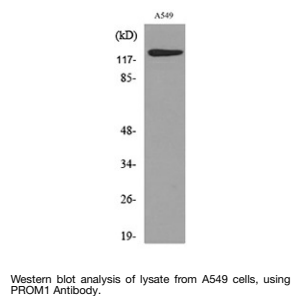
Product Type	Primary antibodies
Short Description	Rabbit polyclonal antibody anti-Prominin-1 (31-80 N-Term) is suitable for use in Western Blot, Immunohistochemistry, Immunofluorescence and ELISA research applications.
Applications	WB, IHC-P, IF-P, ELISA
Host/Source	Rabbit
Reactivity	Human, Mouse

PRODUCT PROPERTIES

Clonality	Polyclonal
Clone ID	
Concentration	1 mg/mL
Conjugation	Unconjugated
Purification	The antibody was affinity-purified from rabbit anti-serum by affinity-chromatography.
Dilution Range	IHC 100-300 WB 1:500-1:2000 ELISA 1:20000
Formulation	PBS, 50% Glycerol, 0.5% BSA and 0.02% Sodium Azide.
Isotype	IgG
Storage Instruction	Store at -20°C for up to 1 year from the date of receipt, and avoid repeat freeze-thaw cycles.

TARGET INFORMATION

Gene ID	8842
Gene Symbol	PROM1
Uniprot ID	PROM1_HUMAN
Immunogen	The antiserum was produced against synthesized peptide derived from the N-terminal region of human PROM1 at amino acid range 41-90
Immunogen Region	31-80 N-Term
Specificity	PROM1 polyclonal antibody (Prominin-1) binds to endogenous Prominin-1 at the amino acid region 31-80 N-Term.
Immunogen Sequence	



This product is suitable for in-vitro studies under the RESEARCH USE ONLY [RUO] licence. This product must not be used as for diagnostic or other medical purposes.
St John's Laboratory Ltd, Knowledge Dock Business Centre, University Way, London, E16 2RD | Tel: 0208 223 3081