

## Anti-MDM2 antibody (381-430 C-Term) (STJ96551)

STJ96551

### GENERAL INFORMATION

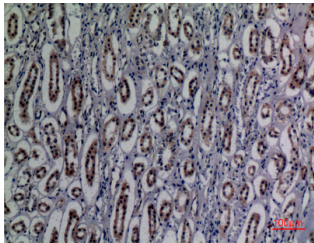
|                          |   |
|--------------------------|---|
| <b>Product Type</b>      | Primary antibodies  |
| <b>Short Description</b> | Rabbit polyclonal antibody anti-E3 Ubiquitin-Protein Ligase Mdm2 (381-430 C-Term) is suitable for use in Immunofluorescence, Immunocytochemistry, Western Blot, Immunohistochemistry and ELISA research applications. |
| <b>Applications</b>      | IF, ICC, WB, IHC-P, ELISA   |
| <b>Host/Source</b>       | Rabbit  |
| <b>Reactivity</b>        | Human, Rat, Mouse   |

### PRODUCT PROPERTIES

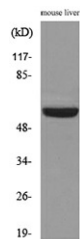
|                            |  |
|----------------------------|--|
| <b>Clonality</b>           | Polyclonal   |
| <b>Clone ID</b>            |  |
| <b>Concentration</b>       | 1 mg/mL  |
| <b>Conjugation</b>         | Unconjugated   |
| <b>Purification</b>        | The antibody was affinity-purified from rabbit anti-serum by affinity-chromatography.          |
| <b>Dilution</b>            | IF 1:50-200  |
| <b>Range</b>               | WB 1:500-1:2000<br>IHC 1:100-300<br>ELISA 1:20000  |
| <b>Formulation</b>         | PBS, 50% Glycerol, 0.5% BSA and 0.02% Sodium Azide.  |
| <b>Isotype</b>             | IgG  |
| <b>Storage Instruction</b> | Store at -20°C for up to 1 year from the date of receipt, and avoid repeat freeze-thaw cycles. |

### TARGET INFORMATION

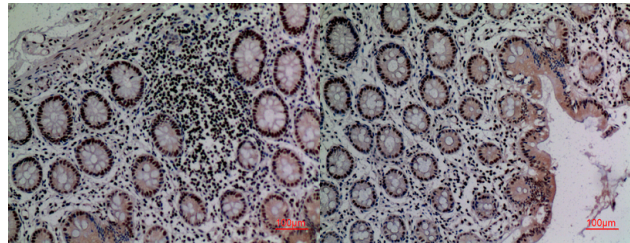
|                           |   |
|---------------------------|---|
| <b>Gene ID</b>            | <a href="#">4193</a>  |
| <b>Gene Symbol</b>        | <a href="#">MDM2</a>  |
| <b>Uniprot ID</b>         | <a href="#">MDM2_HUMAN</a>  |
| <b>Immunogen</b>          | The antiserum was produced against synthesized peptide derived from the C-terminal region of human MDM2 at amino acid range 381-430                       |
| <b>Immunogen Region</b>   | 381-430 C-Term  |
| <b>Specificity</b>        | MDM2 polyclonal antibody (E3 Ubiquitin-Protein Ligase Mdm2) binds to endogenous E3 Ubiquitin-Protein Ligase Mdm2 at the amino acid region 381-430 C-Term. |
| <b>Immunogen Sequence</b> |   |



Immunohistochemical analysis of paraffin-embedded human-kidney, antibody was diluted at 1:100



Western blot analysis of lysate from mouse liver cells, using MDM2 Antibody.



Immunohistochemical analysis of paraffin-embedded human-colon, antibody was diluted at 1:100

Immunohistochemical analysis of paraffin-embedded human-colon, antibody was diluted at 1:100

This product is suitable for in-vitro studies under the RESEARCH USE ONLY [RUO] licence. This product must not be used as for diagnostic or other medical purposes.  
St John's Laboratory Ltd, Knowledge Dock Business Centre, University Way, London, E16 2RD | Tel: 0208 223 3081