

Anti-ALDOC antibody (21-70 N-Term) (STJ96549)

STJ96549

GENERAL INFORMATION

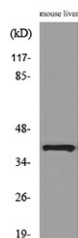
Product Type	Primary antibodies
Short Description	Rabbit polyclonal antibody anti-Fructose-Bisphosphate Aldolase C (21-70 N-Term) is suitable for use in Western Blot, Immunohistochemistry, Immunofluorescence and ELISA research applications.
Applications	WB, IHC-P, IF-P, ELISA
Host/Source	Rabbit
Reactivity	Human, Mouse, Rat

PRODUCT PROPERTIES

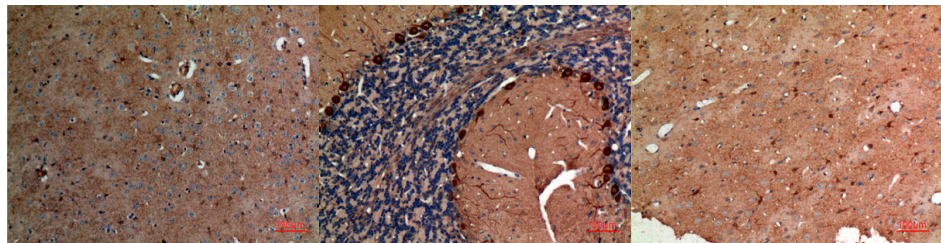
Clonality	Polyclonal
Clone ID	
Concentration	1 mg/mL
Conjugation	Unconjugated
Purification	The antibody was affinity-purified from rabbit anti-serum by affinity-chromatography.
Dilution Range	WB 1:500-1:2000 IHC 1:100-300 ELISA 1:20000
Formulation	PBS, 50% Glycerol, 0.5% BSA and 0.02% Sodium Azide.
Isotype	IgG
Storage Instruction	Store at -20°C for up to 1 year from the date of receipt, and avoid repeat freeze-thaw cycles.

TARGET INFORMATION

Gene ID	230
Gene Symbol	ALDOC
Uniprot ID	ALDOC_HUMAN
Immunogen	The antiserum was produced against synthesized peptide derived from the N-terminal region of human ALDOC at amino acid range 21-70
Immunogen Region	21-70 N-Term
Specificity	ALDOC polyclonal antibody (Fructose-Bisphosphate Aldolase C) binds to endogenous Fructose-Bisphosphate Aldolase C at the amino acid region 21-70 N-Term.
Immunogen Sequence	



Western blot analysis of lysate from mouse liver cells, using ALDOC Antibody.



Immunohistochemical analysis of paraffin-embedded mouse-brain, antibody was diluted at 1:100

Immunohistochemical analysis of paraffin-embedded rat-brain, antibody was diluted at 1:100

Immunohistochemical analysis of paraffin-embedded rat-brain, antibody was diluted at 1:100

This product is suitable for in-vitro studies under the RESEARCH USE ONLY [RUO] licence. This product must not be used as for diagnostic or other medical purposes.
St John's Laboratory Ltd, Knowledge Dock Business Centre, University Way, London, E16 2RD | Tel: 0208 223 3081