

Anti-FGF20 antibody (Internal) (STJ96543)

STJ96543

GENERAL INFORMATION

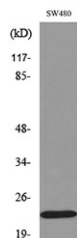
Product Type	Primary antibodies
Short Description	Rabbit polyclonal antibody anti-Fibroblast Growth Factor 20 (Internal) is suitable for use in Western Blot, Immunohistochemistry, Immunofluorescence and ELISA research applications.
Applications	WB, IHC-P, IF-P, ELISA
Host/Source	Rabbit
Reactivity	Human, Mouse, Rat

PRODUCT PROPERTIES

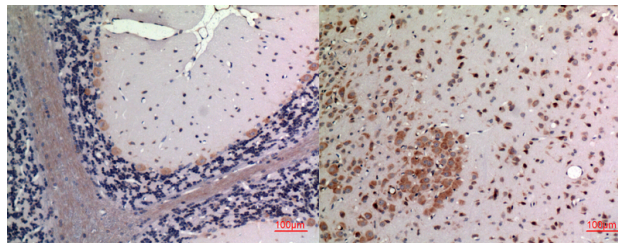
Clonality	Polyclonal
Clone ID	
Concentration	1 mg/mL
Conjugation	Unconjugated
Purification	The antibody was affinity-purified from rabbit anti-serum by affinity-chromatography.
Dilution Range	WB 1:500-1:2000 IHC 1:100-300 ELISA 1:20000
Formulation	PBS, 50% Glycerol, 0.5% BSA and 0.02% Sodium Azide.
Isotype	IgG
Storage Instruction	Store at -20°C for up to 1 year from the date of receipt, and avoid repeat freeze-thaw cycles.

TARGET INFORMATION

Gene ID	26281
Gene Symbol	FGF20
Uniprot ID	FGF20_HUMAN
Immunogen	The antiserum was produced against synthesized peptide derived from the Internal region of human FGF20 at amino acid range 151-200
Immunogen Region	Internal
Specificity	FGF20 polyclonal antibody (Fibroblast Growth Factor 20) binds to endogenous Fibroblast Growth Factor 20 at the amino acid region Internal.
Immunogen Sequence	

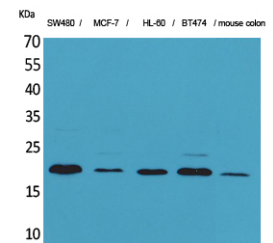


Western blot analysis of lysate from SW480 cells, using FGF20 Antibody.



Immunohistochemical analysis of paraffin-embedded rat-brain, antibody was diluted at 1:100

Immunohistochemical analysis of paraffin-embedded rat-brain, antibody was diluted at 1:100



Western blot analysis of SW480, MCF-7, HL-60, BT474, mouse colon cells using FGF-20 Polyclonal Antibody. Secondary antibody was diluted at 1:20000

This product is suitable for in-vitro studies under the RESEARCH USE ONLY [RUO] licence. This product must not be used as for diagnostic or other medical purposes.
St John's Laboratory Ltd, Knowledge Dock Business Centre, University Way, London, E16 2RD | Tel: 0208 223 3081