

Anti-PLA2G4A antibody (21-70 N-Term) (STJ96541)

STJ96541

GENERAL INFORMATION

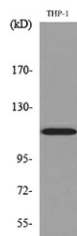
Product Type	Primary antibodies
Short Description	Rabbit polyclonal antibody anti-Cytosolic Phospholipase A2 (21-70 N-Term) is suitable for use in Western Blot, Immunohistochemistry, Immunofluorescence and ELISA research applications.
Applications	WB, IHC-P, IF-P, ELISA
Host/Source	Rabbit
Reactivity	Human, Mouse, Rat

PRODUCT PROPERTIES

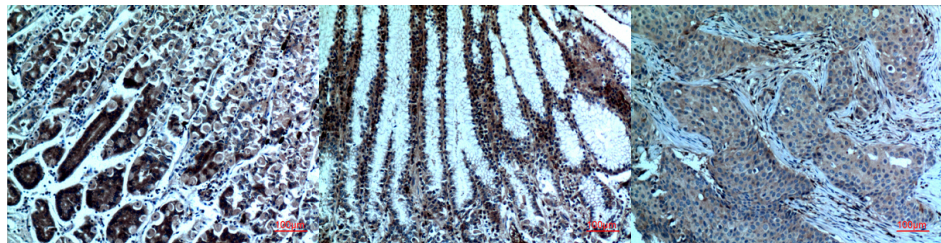
Clonality	Polyclonal
Clone ID	
Concentration	1 mg/mL
Conjugation	Unconjugated
Purification	The antibody was affinity-purified from rabbit anti-serum by affinity-chromatography.
Dilution Range	WB 1:500-1:2000 IHC 1:100-300 ELISA 1:20000
Formulation	PBS, 50% Glycerol, 0.5% BSA and 0.02% Sodium Azide.
Isotype	IgG
Storage Instruction	Store at -20°C for up to 1 year from the date of receipt, and avoid repeat freeze-thaw cycles.

TARGET INFORMATION

Gene ID	5321
Gene Symbol	PLA2G4A
Uniprot ID	PA24A_HUMAN
Immunogen	The antiserum was produced against synthesized peptide derived from the N-terminal region of human PLA2G4A at amino acid range 31-80
Immunogen Region	21-70 N-Term
Specificity	PLA2G4A polyclonal antibody (Cytosolic Phospholipase A2) binds to endogenous Cytosolic Phospholipase A2 at the amino acid region 21-70 N-Term.
Immunogen Sequence	



Western blot analysis of lysate from THP-1 cells, using PLA2G4A Antibody.



Immunohistochemical analysis of paraffin-embedded human-stomach, antibody was diluted at 1:100

Immunohistochemical analysis of paraffin-embedded human-stomach, antibody was diluted at 1:100

Immunohistochemical analysis of paraffin-embedded human-breast-cancer, antibody was diluted at 1:100