

## Anti-CPE antibody (421-470 C-Term) (STJ96532)

STJ96532

### GENERAL INFORMATION

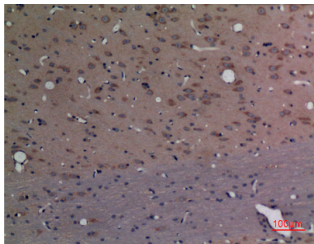
<b>Product Type</b>	Primary antibodies
<b>Short Description</b>	Rabbit polyclonal antibody anti-Carboxypeptidase E (421-470 C-Term) is suitable for use in Western Blot, Immunohistochemistry, Immunofluorescence and ELISA research applications.
<b>Applications</b>	WB, IHC-P, IF-P, ELISA
<b>Host/Source</b>	Rabbit
<b>Reactivity</b>	Human, Mouse, Rat

### PRODUCT PROPERTIES

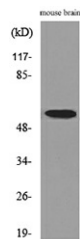
<b>Clonality</b>	Polyclonal
<b>Clone ID</b>	
<b>Concentration</b>	1 mg/mL
<b>Conjugation</b>	Unconjugated
<b>Purification</b>	The antibody was affinity-purified from rabbit anti-serum by affinity-chromatography.
<b>Dilution Range</b>	WB 1:500-1:2000 IHC 1:100-300 ELISA 1:20000
<b>Formulation</b>	PBS, 50% Glycerol, 0.5% BSA and 0.02% Sodium Azide.
<b>Isotype</b>	IgG
<b>Storage Instruction</b>	Store at -20°C for up to 1 year from the date of receipt, and avoid repeat freeze-thaw cycles.

### TARGET INFORMATION

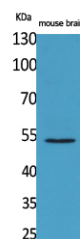
<b>Gene ID</b>	1363
<b>Gene Symbol</b>	CPE
<b>Uniprot ID</b>	CBPE_HUMAN
<b>Immunogen</b>	The antiserum was produced against synthesized peptide derived from the C-terminal region of human CPE at amino acid range 427-476
<b>Immunogen Region</b>	421-470 C-Term
<b>Specificity</b>	CPE polyclonal antibody (Carboxypeptidase E) binds to endogenous Carboxypeptidase E at the amino acid region 421-470 C-Term.
<b>Immunogen Sequence</b>	



Immunohistochemical analysis of paraffin-embedded rat-brain, antibody was diluted at 1:100



Western blot analysis of lysate from mouse brain cells, using CPE Antibody.



Western blot analysis of mouse brain cells using CPE Polyclonal Antibody. Secondary antibody was diluted at 1:20000