

Anti-BRMS1 antibody (C-Term) (STJ96523)

STJ96523

GENERAL INFORMATION

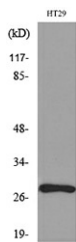
Product Type	Primary antibodies
Short Description	Rabbit polyclonal antibody anti-Breast Cancer Metastasis-Suppressor 1 (C-Term) is suitable for use in Western Blot and ELISA research applications.
Applications	WB, ELISA
Host/Source	Rabbit
Reactivity	Human, Mouse, Rat

PRODUCT PROPERTIES

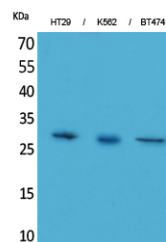
Clonality	Polyclonal
Clone ID	
Concentration	1 mg/mL
Conjugation	Unconjugated
Purification	The antibody was affinity-purified from rabbit anti-serum by affinity-chromatography.
Dilution Range	WB 1:500-1:2000 ELISA 1:20000
Formulation	PBS, 50% Glycerol, 0.5% BSA and 0.02% Sodium Azide.
Isotype	IgG
Storage Instruction	Store at -20°C for up to 1 year from the date of receipt, and avoid repeat freeze-thaw cycles.

TARGET INFORMATION

Gene ID	25855
Gene Symbol	BRMS1
Uniprot ID	BRMS1_HUMAN
Immunogen	The antiserum was produced against synthesized peptide derived from the C-terminal region of human BRMS1 at amino acid range 197-246
Immunogen Region	C-Term
Specificity	BRMS1 polyclonal antibody (Breast Cancer Metastasis-Suppressor 1) binds to endogenous Breast Cancer Metastasis-Suppressor 1 at the amino acid region C-Term.
Immunogen Sequence	



Western blot analysis of lysate from HT29 cells, using BRMS1 Antibody.



Western blot analysis of HT29, K562, BT474 cells using BRMS-1 Polyclonal Antibody. Secondary antibody was diluted at 1:20000

This product is suitable for in-vitro studies under the RESEARCH USE ONLY [RUO] licence. This product must not be used as for diagnostic or other medical purposes.
St John's Laboratory Ltd, Knowledge Dock Business Centre, University Way, London, E16 2RD | Tel: 0208 223 3081