

Anti-CDH6 antibody (180-260 Internal) (STJ96476)

STJ96476

GENERAL INFORMATION

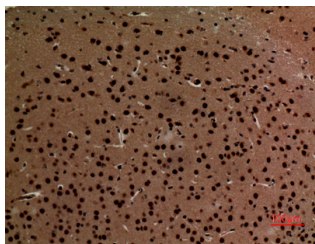
Product Type	Primary antibodies
Short Description	Rabbit polyclonal antibody anti-Cadherin-6 (180-260 Internal) is suitable for use in Western Blot, Immunohistochemistry, Immunofluorescence and ELISA research applications.
Applications	WB, IHC-P, IF-P, ELISA
Host/Source	Rabbit
Reactivity	Human, Mouse, Rat

PRODUCT PROPERTIES

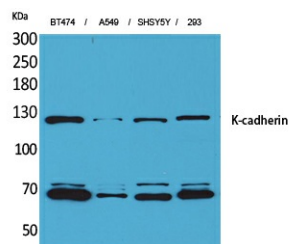
Clonality	Polyclonal
Clone ID	
Concentration	1 mg/mL
Conjugation	Unconjugated
Purification	The antibody was affinity-purified from rabbit anti-serum by affinity-chromatography.
Dilution Range	WB 1:500-1:2000 IHC 1:100-300 ELISA 1:20000
Formulation	PBS, 50% Glycerol, 0.5% BSA and 0.02% Sodium Azide.
Isotype	IgG
Storage Instruction	Store at -20°C for up to 1 year from the date of receipt, and avoid repeat freeze-thaw cycles.

TARGET INFORMATION

Gene ID	1004
Gene Symbol	CDH6
Uniprot ID	CADH6_HUMAN
Immunogen	Synthesized peptide derived from K-cadherin. at amino acid range: 180-260
Immunogen Region	180-260 Internal
Specificity	CDH6 polyclonal antibody (Cadherin-6) binds to endogenous Cadherin-6 at the amino acid region 180-260 Internal.
Immunogen Sequence	



Immunohistochemical analysis of paraffin-embedded mouse-brain, antibody was diluted at 1:100



Western blot analysis of BT474, A549, SHSY5Y, 293 cells using K-cadherin Polyclonal Antibody. Secondary antibody was diluted at 1:20000