

Anti-ACTC1 antibody (1-80 N-Term) (STJ96475)

STJ96475

GENERAL INFORMATION

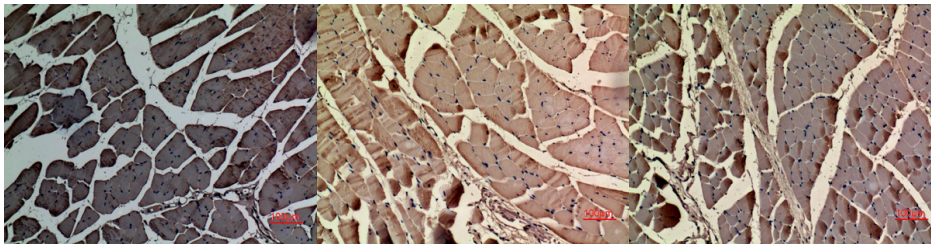
Product Type	Primary antibodies
Short Description	Rabbit polyclonal antibody anti-Actin-Alpha Cardiac Muscle 1 (1-80 N-Term) is suitable for use in Western Blot, Immunohistochemistry, Immunofluorescence and ELISA research applications.
Applications	WB, IHC-P, IF-P, ELISA
Host/Source	Rabbit
Reactivity	Human, Mouse, Rat

PRODUCT PROPERTIES

Clonality	Polyclonal
Clone ID	
Concentration	1 mg/mL
Conjugation	Unconjugated
Purification	The antibody was affinity-purified from rabbit anti-serum by affinity-chromatography.
Dilution Range	WB 1:500-1:2000 IHC 1:100-300 ELISA 1:20000
Formulation	PBS, 50% Glycerol, 0.5% BSA and 0.02% Sodium Azide.
Isotype	IgG
Storage Instruction	Store at -20°C for up to 1 year from the date of receipt, and avoid repeat freeze-thaw cycles.

TARGET INFORMATION

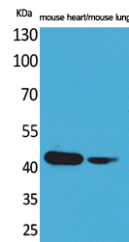
Gene ID	70
Gene Symbol	ACTC1
Uniprot ID	ACTC_HUMAN
Immunogen	Synthesized peptide derived from Actin-Alpha cardiac muscle. at amino acid range: 1-80
Immunogen Region	1-80 N-Term
Specificity	ACTC1 polyclonal antibody (Actin-Alpha Cardiac Muscle 1) binds to endogenous Actin-Alpha Cardiac Muscle 1 at the amino acid region 1-80 N-Term.
Immunogen Sequence	



Immunohistochemical analysis of paraffin-embedded mouse-muscle, antibody was diluted at 1:100

Immunohistochemical analysis of paraffin-embedded rat-muscle, antibody was diluted at 1:100

Immunohistochemical analysis of paraffin-embedded rat-muscle, antibody was diluted at 1:100



Western blot analysis of mouse heart, mouse lung cells using Actin-Alpha cardiac muscle Polyclonal Antibody. Secondary antibody was diluted at 1:20000

This product is suitable for in-vitro studies under the RESEARCH USE ONLY [RUO] licence. This product must not be used as for diagnostic or other medical purposes.
St John's Laboratory Ltd, Knowledge Dock Business Centre, University Way, London, E16 2RD | Tel: 0208 223 3081