

## Anti-LIF antibody (141-190 C-Term) (STJ96472)

STJ96472

### GENERAL INFORMATION

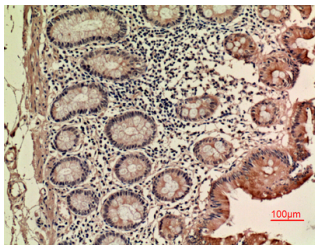
<b>Product Type</b>	Primary antibodies
<b>Short Description</b>	Rabbit polyclonal antibody anti-Leukemia Inhibitory Factor (141-190 C-Term) is suitable for use in Western Blot, Immunohistochemistry, Immunofluorescence and ELISA research applications.
<b>Applications</b>	WB, IHC-P, IF-P, ELISA
<b>Host/Source</b>	Rabbit
<b>Reactivity</b>	Human, Rat, Mouse

### PRODUCT PROPERTIES

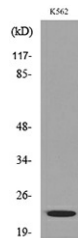
<b>Clonality</b>	Polyclonal
<b>Clone ID</b>	
<b>Concentration</b>	1 mg/mL
<b>Conjugation</b>	Unconjugated
<b>Purification</b>	The antibody was affinity-purified from rabbit anti-serum by affinity-chromatography.
<b>Dilution Range</b>	WB 1:500-1:2000 IHC 1:100-300 ELISA 1:20000
<b>Formulation</b>	PBS, 50% Glycerol, 0.5% BSA and 0.02% Sodium Azide.
<b>Isotype</b>	IgG
<b>Storage Instruction</b>	Store at -20°C for up to 1 year from the date of receipt, and avoid repeat freeze-thaw cycles.

### TARGET INFORMATION

<b>Gene ID</b>	3976
<b>Gene Symbol</b>	LIF
<b>Uniprot ID</b>	LIF_HUMAN
<b>Immunogen</b>	The antiserum was produced against synthesized peptide derived from the C-terminal region of human LIF at amino acid range 141-190
<b>Immunogen Region</b>	141-190 C-Term
<b>Specificity</b>	LIF polyclonal antibody (Leukemia Inhibitory Factor) binds to endogenous Leukemia Inhibitory Factor at the amino acid region 141-190 C-Term.
<b>Immunogen Sequence</b>	



Immunohistochemical analysis of paraffin-embedded human colon, antibody was diluted at 1:100



Western blot analysis of lysate from K562 cells, using LIF Antibody.



Western blot analysis of K562 cells using LIF Polyclonal Antibody. Secondary antibody was diluted at 1:20000

This product is suitable for in-vitro studies under the RESEARCH USE ONLY [RUO] licence. This product must not be used as for diagnostic or other medical purposes.  
St John's Laboratory Ltd, Knowledge Dock Business Centre, University Way, London, E16 2RD | Tel: 0208 223 3081