

Anti-SLC34A2 antibody (630-710 C-Term) (STJ96469)

STJ96469

GENERAL INFORMATION

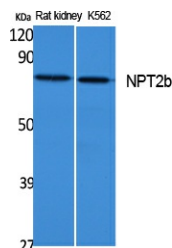
Product Type	Primary antibodies
Short Description	Rabbit polyclonal antibody anti-Sodium-Dependent Phosphate Transport Protein 2b (630-710 C-Term) is suitable for use in Western Blot and ELISA research applications.
Applications	WB, ELISA
Host/Source	Rabbit
Reactivity	Human, Rat

PRODUCT PROPERTIES

Clonality	Polyclonal
Clone ID	
Concentration	1 mg/mL
Conjugation	Unconjugated
Purification	The antibody was affinity-purified from rabbit anti-serum by affinity-chromatography.
Dilution	WB 1:500-1:2000
Range	ELISA 1:20000
Formulation	PBS, 50% Glycerol, 0.5% BSA and 0.02% Sodium Azide.
Isotype	IgG
Storage Instruction	Store at -20°C for up to 1 year from the date of receipt, and avoid repeat freeze-thaw cycles.

TARGET INFORMATION

Gene ID	10568
Gene Symbol	SLC34A2
Uniprot ID	NPT2B_HUMAN
Immunogen	Synthesized peptide derived from NPT2b. at amino acid range: 630-710
Immunogen Region	630-710 C-Term
Specificity	SLC34A2 polyclonal antibody (Sodium-Dependent Phosphate Transport Protein 2b) binds to endogenous Sodium-Dependent Phosphate Transport Protein 2b at the amino acid region 630-710 C-Term.
Immunogen Sequence	



Western blot analysis of extracts from rat kidney, K562 cells, using NPT2b Polyclonal Antibody. Secondary antibody was diluted at 1:20000

This product is suitable for in-vitro studies under the RESEARCH USE ONLY [RUO] licence. This product must not be used as for diagnostic or other medical purposes.
 St John's Laboratory Ltd, Knowledge Dock Business Centre, University Way, London, E16 2RD | Tel: 0208 223 3081