

Anti-SLC8A1 antibody (270-350 Internal) (STJ96468)

STJ96468

GENERAL INFORMATION

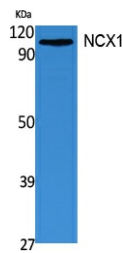
Product Type	Primary antibodies
Short Description	Rabbit polyclonal antibody anti-Sodium/Calcium Exchanger 1 (270-350 Internal) is suitable for use in Western Blot and ELISA research applications.
Applications	WB, ELISA
Host/Source	Rabbit
Reactivity	Human, Mouse, Rat

PRODUCT PROPERTIES

Clonality	Polyclonal
Clone ID	
Concentration	1 mg/mL
Conjugation	Unconjugated
Purification	The antibody was affinity-purified from rabbit anti-serum by affinity-chromatography.
Dilution Range	WB 1:500-1:2000 ELISA 1:5000
Formulation	PBS, 50% Glycerol, 0.5% BSA and 0.02% Sodium Azide.
Isotype	IgG
Storage	Store at -20°C for up to 1 year from the date of receipt, and avoid repeat freeze-thaw cycles.
Instruction	

TARGET INFORMATION

Gene ID	6546
Gene Symbol	SLC8A1
Uniprot ID	NAC1_HUMAN
Immunogen	Synthesized peptide derived from NCX1. at amino acid range: 270-350
Immunogen Region	270-350 Internal
Specificity	SLC8A1 polyclonal antibody (Sodium/Calcium Exchanger 1) binds to endogenous Sodium/Calcium Exchanger 1 at the amino acid region 270-350 Internal.
Immunogen Sequence	



Western blot analysis of extracts from 293 cells, using NCX1 Polyclonal Antibody. Secondary antibody was diluted at 1:20000