

Anti-SLC6A14 antibody (C-Term) (STJ96467)

STJ96467

GENERAL INFORMATION

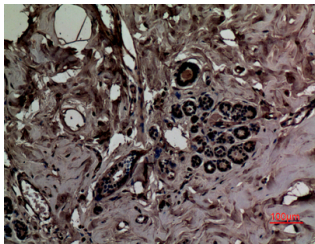
Product Type	Primary antibodies
Short Description	Rabbit polyclonal antibody anti-Sodium-And Chloride-Dependent Neutral And Basic Amino Acid Transporter B (0+ (C-Term) is suitable for use in Western Blot, Immunohistochemistry, Immunofluorescence and ELISA research applications.
Applications	WB, IHC-P, IF-P, ELISA
Host/Source	Rabbit
Reactivity	Human, Rat, Mouse

PRODUCT PROPERTIES

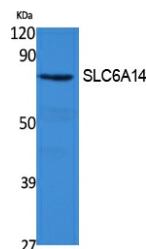
Clonality	Polyclonal
Clone ID	
Concentration	1 mg/mL
Conjugation	Unconjugated
Purification	The antibody was affinity-purified from rabbit anti-serum by affinity-chromatography.
Dilution Range	WB 1:500-1:2000 IHC 1:100-300 ELISA 1:40000
Formulation	PBS, 50% Glycerol, 0.5% BSA and 0.02% Sodium Azide.
Isotype	IgG
Storage Instruction	Store at -20°C for up to 1 year from the date of receipt, and avoid repeat freeze-thaw cycles.

TARGET INFORMATION

Gene ID	11254
Gene Symbol	SLC6A14
Uniprot ID	S6A14_HUMAN
Immunogen	Synthesized peptide derived from the C-terminal region of human SLC6A14.
Immunogen Region	C-Term
Specificity	SLC6A14 polyclonal antibody (Sodium-And Chloride-Dependent Neutral And Basic Amino Acid Transporter B (0+ binds to endogenous Sodium-And Chloride-Dependent Neutral And Basic Amino Acid Transporter B (0+ at the amino acid region C-Term.
Immunogen Sequence	



Immunohistochemical analysis of paraffin-embedded human breast, antibody was diluted at 1:100



Western blot analysis of extracts from 293 cells, using SLC6A14 Polyclonal Antibody. Secondary antibody was diluted at 1:20000

This product is suitable for in-vitro studies under the RESEARCH USE ONLY [RUO] licence. This product must not be used as for diagnostic or other medical purposes.
St John's Laboratory Ltd, Knowledge Dock Business Centre, University Way, London, E16 2RD | Tel: 0208 223 3081