

Anti-RASSF8 antibody (60-140 Internal) (STJ96465)

STJ96465

GENERAL INFORMATION

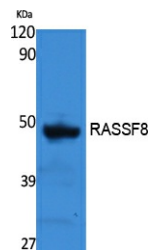
Product Type	Primary antibodies
Short Description	Rabbit polyclonal antibody anti-Ras Association Domain-Containing Protein 8 (60-140 Internal) is suitable for use in Western Blot and ELISA research applications.
Applications	WB, ELISA
Host/Source	Rabbit
Reactivity	Human, Rat

PRODUCT PROPERTIES

Clonality	Polyclonal
Clone ID	
Concentration	1 mg/mL
Conjugation	Unconjugated
Purification	The antibody was affinity-purified from rabbit anti-serum by affinity-chromatography.
Dilution Range	WB 1:500-1:2000 ELISA 1:40000
Formulation	PBS, 50% Glycerol, 0.5% BSA and 0.02% Sodium Azide.
Isotype	IgG
Storage	Store at -20°C for up to 1 year from the date of receipt, and avoid repeat freeze-thaw cycles.
Instruction	

TARGET INFORMATION

Gene ID	11228
Gene Symbol	RASSF8
Uniprot ID	RASF8_HUMAN
Immunogen	Synthesized peptide derived from RASSF8. at amino acid range: 60-140
Immunogen Region	60-140 Internal
Specificity	RASSF8 polyclonal antibody (Ras Association Domain-Containing Protein 8) binds to endogenous Ras Association Domain-Containing Protein 8 at the amino acid region 60-140 Internal.
Immunogen Sequence	



Western blot analysis of extracts from rat stomach, using RASSF8 Polyclonal Antibody. Secondary antibody was diluted at 1:20000