

Anti-ATP12A antibody (380-460 Internal) (STJ96464)

STJ96464

GENERAL INFORMATION

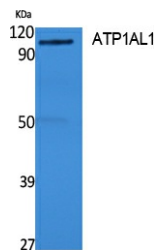
Product Type	Primary antibodies
Short Description	Rabbit polyclonal antibody anti-Potassium-Transporting Atpase Alpha Chain 2 (380-460 Internal) is suitable for use in Western Blot and ELISA research applications.
Applications	WB, ELISA
Host/Source	Rabbit
Reactivity	Human, Rat

PRODUCT PROPERTIES

Clonality	Polyclonal
Clone ID	
Concentration	1 mg/mL
Conjugation	Unconjugated
Purification	The antibody was affinity-purified from rabbit anti-serum by affinity-chromatography.
Dilution Range	WB 1:500-1:2000 ELISA 1:20000
Formulation	PBS, 50% Glycerol, 0.5% BSA and 0.02% Sodium Azide.
Isotype	IgG
Storage Instruction	Store at -20°C for up to 1 year from the date of receipt, and avoid repeat freeze-thaw cycles.

TARGET INFORMATION

Gene ID	479
Gene Symbol	ATP12A
Uniprot ID	AT12A_HUMAN
Immunogen	Synthesized peptide derived from ATP1AL1. at amino acid range: 380-460
Immunogen Region	380-460 Internal
Specificity	ATP12A polyclonal antibody (Potassium-Transporting Atpase Alpha Chain 2) binds to endogenous Potassium-Transporting Atpase Alpha Chain 2 at the amino acid region 380-460 Internal.
Immunogen Sequence	



Western blot analysis of extracts from rat stomach, using ATP1AL1 Polyclonal Antibody. Secondary antibody was diluted at 1:20000