

Anti-SLC6A17 antibody (240-320 Internal) (STJ96462)

STJ96462

GENERAL INFORMATION

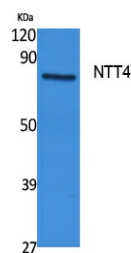
Product Type	Primary antibodies
Short Description	Rabbit polyclonal antibody anti-Sodium-Dependent Neutral Amino Acid Transporter Slc6a17 (240-320 Internal) is suitable for use in Western Blot and ELISA research applications.
Applications	WB, ELISA
Host/Source	Rabbit
Reactivity	Human, Mouse, Rat

PRODUCT PROPERTIES

Clonality	Polyclonal
Clone ID	
Concentration	1 mg/mL
Conjugation	Unconjugated
Purification	The antibody was affinity-purified from rabbit anti-serum by affinity-chromatography.
Dilution	WB 1:500-1:2000
Range	ELISA 1:5000
Formulation	PBS, 50% Glycerol, 0.5% BSA and 0.02% Sodium Azide.
Isotype	IgG
Storage	Store at -20°C for up to 1 year from the date of receipt, and avoid repeat freeze-thaw cycles.
Instruction	

TARGET INFORMATION

Gene ID	388662
Gene Symbol	SLC6A17
Uniprot ID	S6A17_HUMAN
Immunogen	Synthesized peptide derived from NTT4. at amino acid range: 240-320
Immunogen Region	240-320 Internal
Specificity	SLC6A17 polyclonal antibody (Sodium-Dependent Neutral Amino Acid Transporter Slc6a17) binds to endogenous Sodium-Dependent Neutral Amino Acid Transporter Slc6a17 at the amino acid region 240-320 Internal.
Immunogen Sequence	



Western blot analysis of extracts from rat stomach, using NTT4 Polyclonal Antibody. Secondary antibody was diluted at 1:20000