

Anti-NEFL antibody (C-Term) (STJ96461)

STJ96461

GENERAL INFORMATION

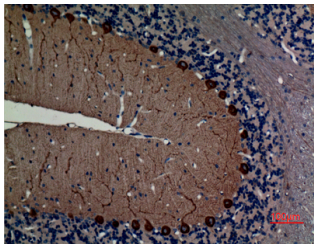
Product Type	Primary antibodies
Short Description	Rabbit polyclonal antibody anti-Neurofilament Light Polypeptide (C-Term) is suitable for use in Western Blot, Immunohistochemistry, Immunofluorescence and ELISA research applications.
Applications	WB, IHC-P, IF-P, ELISA
Host/Source	Rabbit
Reactivity	Human, Mouse, Rat

PRODUCT PROPERTIES

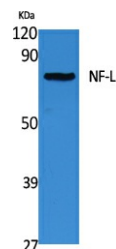
Clonality	Polyclonal
Clone ID	
Concentration	1 mg/mL
Conjugation	Unconjugated
Purification	The antibody was affinity-purified from rabbit anti-serum by affinity-chromatography.
Dilution Range	WB 1:500-1:2000 IHC 1:100-300 ELISA 1:40000
Formulation	PBS, 50% Glycerol, 0.5% BSA and 0.02% Sodium Azide.
Isotype	IgG
Storage Instruction	Store at -20°C for up to 1 year from the date of receipt, and avoid repeat freeze-thaw cycles.

TARGET INFORMATION

Gene ID	4747
Gene Symbol	NEFL
Uniprot ID	NFL_HUMAN
Immunogen	Synthesized peptide derived from the C-terminal region of human NF-L.
Immunogen Region	C-Term
Specificity	NEFL polyclonal antibody (Neurofilament Light Polypeptide) binds to endogenous Neurofilament Light Polypeptide at the amino acid region C-Term.
Immunogen Sequence	



Immunohistochemical analysis of paraffin-embedded rat-brain, antibody was diluted at 1:100



Western blot analysis of extracts from Jurkat cells, using NF-L Polyclonal Antibody. Secondary antibody was diluted at 1:20000