

Anti-CYP2A6/7/13 antibody (Internal) (STJ96458)

STJ96458

GENERAL INFORMATION

Product Type	Primary antibodies
Short Description	Rabbit polyclonal antibody anti-Cytochrome P450 2A6 and Cytochrome P450 2A7 and Cytochrome P450 2A13 (Internal) is suitable for use in Western Blot and ELISA research applications.
Applications	WB, ELISA
Host/Source	Rabbit
Reactivity	Human, Rat, Mouse

PRODUCT PROPERTIES

Clonality	Polyclonal
Clone ID	
Concentration	1 mg/mL
Conjugation	Unconjugated
Purification	The antibody was affinity-purified from rabbit anti-serum by affinity-chromatography.
Dilution	WB 1:500-1:2000
Range	ELISA 1:40000
Formulation	PBS, 50% Glycerol, 0.5% BSA and 0.02% Sodium Azide.
Isotype	IgG
Storage	Store at -20°C for up to 1 year from the date of receipt, and avoid repeat freeze-thaw cycles.
Instruction	

TARGET INFORMATION

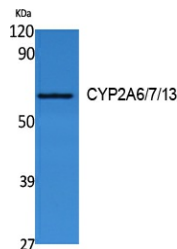
Gene ID	1548 1549 1553 CYP2A6 CYP2A7 CP2A6_HUMAN CP2A7_HUMAN CP2AD_HUMAN
----------------	---

Immunogen Synthesized peptide derived from the Internal region of human CYP2A6/7/13.

Immunogen Region Internal

Specificity CYP2A6/7/13 polyclonal antibody (Cytochrome P450 2A6 and Cytochrome P450 2A7 and Cytochrome P450 2A13) binds to endogenous Cytochrome P450 2A6 and Cytochrome P450 2A7 and Cytochrome P450 2A13 at the amino acid region Internal.

Immunogen Sequence



Western blot analysis of extracts from Jurkat cells, using CYP2A6/7/13 Polyclonal Antibody. Secondary antibody was diluted at 1:20000