

Anti-IL31RA antibody (Internal) (STJ96456)

STJ96456

GENERAL INFORMATION

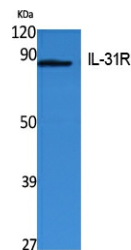
Product Type	Primary antibodies
Short Description	Rabbit polyclonal antibody anti-Interleukin-31 Receptor Subunit Alpha (Internal) is suitable for use in Western Blot and ELISA research applications.
Applications	WB, ELISA
Host/Source	Rabbit
Reactivity	Human, Rat, Mouse

PRODUCT PROPERTIES

Clonality	Polyclonal
Clone ID	
Concentration	1 mg/mL
Conjugation	Unconjugated
Purification	The antibody was affinity-purified from rabbit anti-serum by affinity-chromatography.
Dilution Range	WB 1:500-1:2000 ELISA 1:40000
Formulation	PBS, 50% Glycerol, 0.5% BSA and 0.02% Sodium Azide.
Isotype	IgG
Storage	Store at -20°C for up to 1 year from the date of receipt, and avoid repeat freeze-thaw cycles.
Instruction	

TARGET INFORMATION

Gene ID	133396
Gene Symbol	IL31RA
Uniprot ID	IL31R_HUMAN
Immunogen	Synthesized peptide derived from the Internal region of human IL-31R Alpha.
Immunogen Region	Internal
Specificity	IL31RA polyclonal antibody (Interleukin-31 Receptor Subunit Alpha) binds to endogenous Interleukin-31 Receptor Subunit Alpha at the amino acid region Internal.
Immunogen Sequence	



Western blot analysis of extracts from Jurkat cells, using IL-31R Polyclonal Antibody. Secondary antibody was diluted at 1:20000