

Anti-IFNLR1 antibody (Internal) (STJ96454)

STJ96454

GENERAL INFORMATION

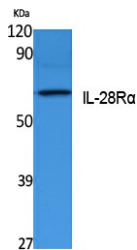
Product Type	Primary antibodies
Short Description	Rabbit polyclonal antibody anti-Interferon Lambda Receptor 1 (Internal) is suitable for use in Western Blot and ELISA research applications.
Applications	WB, ELISA
Host/Source	Rabbit
Reactivity	Human, Rat, Mouse

PRODUCT PROPERTIES

Clonality	Polyclonal
Clone ID	
Concentration	1 mg/mL
Conjugation	Unconjugated
Purification	The antibody was affinity-purified from rabbit anti-serum by affinity-chromatography.
Dilution Range	WB 1:500-1:2000 ELISA 1:40000
Formulation	PBS, 50% Glycerol, 0.5% BSA and 0.02% Sodium Azide.
Isotype	IgG
Storage Instruction	Store at -20°C for up to 1 year from the date of receipt, and avoid repeat freeze-thaw cycles.

TARGET INFORMATION

Gene ID	163702
Gene Symbol	IFNLR1
Uniprot ID	INLR1_HUMAN
Immunogen	Synthesized peptide derived from the Internal region of human IL-28R Alpha.
Immunogen Region	Internal
Specificity	IFNLR1 polyclonal antibody (Interferon Lambda Receptor 1) binds to endogenous Interferon Lambda Receptor 1 at the amino acid region Internal.
Immunogen Sequence	



Western blot analysis of extracts from K562 cells, using IL-28R Alpha Polyclonal Antibody. Secondary antibody was diluted at 1:20000

This product is suitable for in-vitro studies under the RESEARCH USE ONLY [RUO] licence. This product must not be used as for diagnostic or other medical purposes.
St John's Laboratory Ltd, Knowledge Dock Business Centre, University Way, London, E16 2RD | Tel: 0208 223 3081