

Anti-RHCG antibody (Internal) (STJ96453)

STJ96453

GENERAL INFORMATION

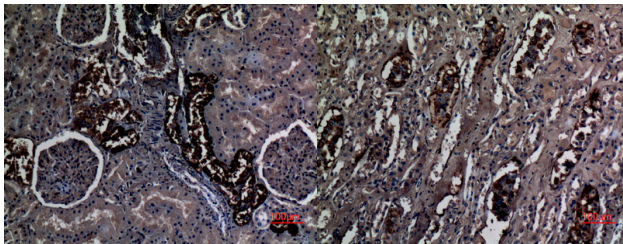
Product Type	Primary antibodies
Short Description	Rabbit polyclonal antibody anti-Ammonium Transporter Rh Type C (Internal) is suitable for use in Western Blot, Immunohistochemistry, Immunofluorescence and ELISA research applications.
Applications	WB, IHC-P, IF-P, ELISA
Host/Source	Rabbit
Reactivity	Human, Rat, Mouse

PRODUCT PROPERTIES

Clonality	Polyclonal
Clone ID	
Concentration	1 mg/mL
Conjugation	Unconjugated
Purification	The antibody was affinity-purified from rabbit anti-serum by affinity-chromatography.
Dilution Range	WB 1:500-1:2000 IHC 1:100-300 ELISA 1:40000
Formulation	PBS, 50% Glycerol, 0.5% BSA and 0.02% Sodium Azide.
Isotype	IgG
Storage Instruction	Store at -20°C for up to 1 year from the date of receipt, and avoid repeat freeze-thaw cycles.

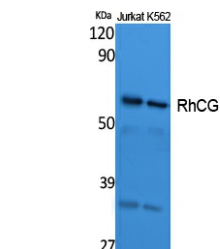
TARGET INFORMATION

Gene ID	51458
Gene Symbol	RHCG
Uniprot ID	RHCG_HUMAN
Immunogen	Synthesized peptide derived from the Internal region of human RhCG.
Immunogen Region	Internal
Specificity	RHCG polyclonal antibody (Ammonium Transporter Rh Type C) binds to endogenous Ammonium Transporter Rh Type C at the amino acid region Internal.
Immunogen Sequence	



Immunohistochemical analysis of paraffin-embedded human-kidney, antibody was diluted at 1:100

Immunohistochemical analysis of paraffin-embedded human-kidney, antibody was diluted at 1:100



Western blot analysis of extracts from Jurkat, K562 cells, using RhCG Polyclonal Antibody. Secondary antibody was diluted at 1:20000

This product is suitable for in-vitro studies under the RESEARCH USE ONLY [RUO] licence. This product must not be used as for diagnostic or other medical purposes.
St John's Laboratory Ltd, Knowledge Dock Business Centre, University Way, London, E16 2RD | Tel: 0208 223 3081