

Anti-MPHOSPH10 antibody (60-140 Internal) (STJ96444)

STJ96444

GENERAL INFORMATION

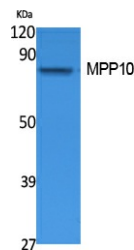
Product Type	Primary antibodies
Short Description	Rabbit polyclonal antibody anti-U3 Small Nucleolar Ribonucleoprotein Protein Mpp10 (60-140 Internal) is suitable for use in Western Blot and ELISA research applications.
Applications	WB, ELISA
Host/Source	Rabbit
Reactivity	Human, Rat, Mouse

PRODUCT PROPERTIES

Clonality	Polyclonal
Clone ID	
Concentration	1 mg/mL
Conjugation	Unconjugated
Purification	The antibody was affinity-purified from rabbit anti-serum by affinity-chromatography.
Dilution	WB 1:500-1:2000
Range	ELISA 1:10000
Formulation	PBS, 50% Glycerol, 0.5% BSA and 0.02% Sodium Azide.
Isotype	IgG
Storage	Store at -20°C for up to 1 year from the date of receipt, and avoid repeat freeze-thaw cycles.
Instruction	

TARGET INFORMATION

Gene ID	10199
Gene Symbol	MPHOSPH10
Uniprot ID	MPP10_HUMAN
Immunogen	Synthesized peptide derived from MPP10. at amino acid range: 60-140
Immunogen Region	60-140 Internal
Specificity	MPHOSPH10 polyclonal antibody (U3 Small Nucleolar Ribonucleoprotein Protein Mpp10) binds to endogenous U3 Small Nucleolar Ribonucleoprotein Protein Mpp10 at the amino acid region 60-140 Internal.
Immunogen Sequence	



Western blot analysis of extracts from Jurkat cells, using MPP10 Polyclonal Antibody. Secondary antibody was diluted at 1:20000 cells nucleus extracted by Minute TM Cytoplasmic and Nuclear Fractionation kit (SC-003, Inventiotech, MN, USA).