

Anti-PDP2 antibody (70-150 Internal) (STJ96439)

STJ96439

GENERAL INFORMATION

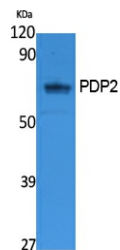
Product Type	Primary antibodies
Short Description	Rabbit polyclonal antibody anti-Pyruvate Dehydrogenase Acetyl-Transferring-Phosphatase 2-Mitochondrial (70-150 Internal) is suitable for use in Western Blot and ELISA research applications.
Applications	WB, ELISA
Host/Source	Rabbit
Reactivity	Human, Rat, Mouse

PRODUCT PROPERTIES

Clonality	Polyclonal
Clone ID	
Concentration	1 mg/mL
Conjugation	Unconjugated
Purification	The antibody was affinity-purified from rabbit anti-serum by affinity-chromatography.
Dilution	WB 1:500-1:2000
Range	ELISA 1:20000
Formulation	PBS, 50% Glycerol, 0.5% BSA and 0.02% Sodium Azide.
Isotype	IgG
Storage	Store at -20°C for up to 1 year from the date of receipt, and avoid repeat freeze-thaw cycles.
Instruction	

TARGET INFORMATION

Gene ID	57546
Gene Symbol	PDP2
Uniprot ID	PDP2_HUMAN
Immunogen	Synthesized peptide derived from PDP2. at amino acid range: 70-150
Immunogen Region	70-150 Internal
Specificity	PDP2 polyclonal antibody (Pyruvate Dehydrogenase Acetyl-Transferring-Phosphatase 2-Mitochondrial) binds to endogenous Pyruvate Dehydrogenase Acetyl-Transferring-Phosphatase 2-Mitochondrial at the amino acid region 70-150 Internal.
Immunogen Sequence	



Western blot analysis of extracts from K562 cells, using PDP2 Polyclonal Antibody. Secondary antibody was diluted at 1:20000

This product is suitable for in-vitro studies under the RESEARCH USE ONLY [RUO] licence. This product must not be used as for diagnostic or other medical purposes.
 St John's Laboratory Ltd, Knowledge Dock Business Centre, University Way, London, E16 2RD | Tel: 0208 223 3081