

Anti-CAMK2D antibody (Internal) (STJ96428)

STJ96428

GENERAL INFORMATION

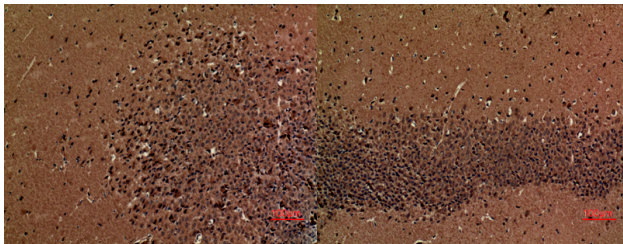
Product Type	Primary antibodies
Short Description	Rabbit polyclonal antibody anti-Calcium/Calmodulin-Dependent Protein Kinase Type II Subunit Delta (Internal) is suitable for use in Western Blot, Immunohistochemistry, Immunofluorescence and ELISA research applications.
Applications	WB, IHC-P, IF-P, ELISA
Host/Source	Rabbit
Reactivity	Human, Mouse, Rat

PRODUCT PROPERTIES

Clonality	Polyclonal
Clone ID	
Concentration	1 mg/mL
Conjugation	Unconjugated
Purification	The antibody was affinity-purified from rabbit anti-serum by affinity-chromatography.
Dilution Range	WB 1:500-1:2000 IHC 1:100-300 ELISA 1:40000
Formulation	PBS, 50% Glycerol, 0.5% BSA and 0.02% Sodium Azide.
Isotype	IgG
Storage Instruction	Store at -20°C for up to 1 year from the date of receipt, and avoid repeat freeze-thaw cycles.

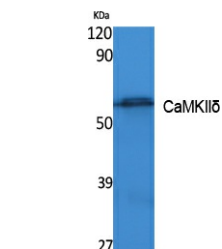
TARGET INFORMATION

Gene ID	817
Gene Symbol	CAMK2D
Uniprot ID	KCC2D_HUMAN
Immunogen	Synthesized peptide derived from the Internal region of human CaMKII Delta.
Immunogen Region	Internal
Specificity	CAMK2D polyclonal antibody (Calcium/Calmodulin-Dependent Protein Kinase Type II Subunit Delta) binds to endogenous Calcium/Calmodulin-Dependent Protein Kinase Type II Subunit Delta at the amino acid region Internal.
Immunogen Sequence	



Immunohistochemical analysis of paraffin-embedded mouse-brain, antibody was diluted at 1:100

Immunohistochemical analysis of paraffin-embedded mouse-brain, antibody was diluted at 1:100



Western blot analysis of extracts from K562 cells, using CaMKII Delta Polyclonal Antibody. Secondary antibody was diluted at 1:20000

This product is suitable for in-vitro studies under the RESEARCH USE ONLY [RUO] licence. This product must not be used as for diagnostic or other medical purposes.
St John's Laboratory Ltd, Knowledge Dock Business Centre, University Way, London, E16 2RD | Tel: 0208 223 3081