

Anti-APOL6 antibody (240-320 C-Term) (STJ96424)

STJ96424

GENERAL INFORMATION

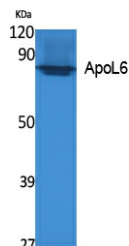
Product Type	Primary antibodies
Short Description	Rabbit polyclonal antibody anti-Apolipoprotein L6 (240-320 C-Term) is suitable for use in Western Blot and ELISA research applications.
Applications	WB, ELISA
Host/Source	Rabbit
Reactivity	Human, Rat, Mouse

PRODUCT PROPERTIES

Clonality	Polyclonal
Clone ID	
Concentration	1 mg/mL
Conjugation	Unconjugated
Purification	The antibody was affinity-purified from rabbit anti-serum by affinity-chromatography.
Dilution Range	WB 1:500-1:2000 ELISA 1:10000
Formulation	PBS, 50% Glycerol, 0.5% BSA and 0.02% Sodium Azide.
Isotype	IgG
Storage Instruction	Store at -20°C for up to 1 year from the date of receipt, and avoid repeat freeze-thaw cycles.

TARGET INFORMATION

Gene ID	80830
Gene Symbol	APOL6
Uniprot ID	APOL6_HUMAN
Immunogen	Synthesized peptide derived from ApoL6. at amino acid range: 240-320
Immunogen Region	240-320 C-Term
Specificity	APOL6 polyclonal antibody (Apolipoprotein L6) binds to endogenous Apolipoprotein L6 at the amino acid region 240-320 C-Term.
Immunogen Sequence	



Western blot analysis of extracts from K562 cells, using ApoL6 Polyclonal Antibody. Secondary antibody was diluted at 1:20000

This product is suitable for in-vitro studies under the RESEARCH USE ONLY [RUO] licence. This product must not be used as for diagnostic or other medical purposes.
St John's Laboratory Ltd, Knowledge Dock Business Centre, University Way, London, E16 2RD | Tel: 0208 223 3081