

Anti-PLK1 antibody (80-160) (STJ96419)

STJ96419

GENERAL INFORMATION

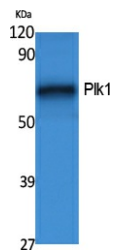
Product Type	Primary antibodies
Short Description	Rabbit polyclonal antibody anti-Serine/Threonine-Protein Kinase Plk1 (80-160) is suitable for use in Western Blot and ELISA research applications.
Applications	WB, ELISA
Host/Source	Rabbit
Reactivity	Human, Mouse, Rat

PRODUCT PROPERTIES

Clonality	Polyclonal
Clone ID	
Concentration	1 mg/mL
Conjugation	Unconjugated
Purification	The antibody was affinity-purified from rabbit anti-serum by affinity-chromatography.
Dilution Range	WB 1:500-1:2000 ELISA 1:20000
Formulation	PBS, 50% Glycerol, 0.5% BSA and 0.02% Sodium Azide.
Isotype	IgG
Storage	Store at -20°C for up to 1 year from the date of receipt, and avoid repeat freeze-thaw cycles.
Instruction	

TARGET INFORMATION

Gene ID	5347
Gene Symbol	PLK1
Uniprot ID	PLK1_HUMAN
Immunogen	Synthesized peptide derived from Plk1. at amino acid range: 80-160
Immunogen Region	80-160
Specificity	PLK1 polyclonal antibody (Serine/Threonine-Protein Kinase Plk1) binds to endogenous Serine/Threonine-Protein Kinase Plk1 at the amino acid region 80-160.
Immunogen Sequence	



Western blot analysis of extracts from NIH-3T3 cells, using Plk1 Polyclonal Antibody. Secondary antibody was diluted at 1:20000