

Anti-STAT2 antibody (570-650) (STJ96415)

STJ96415

GENERAL INFORMATION

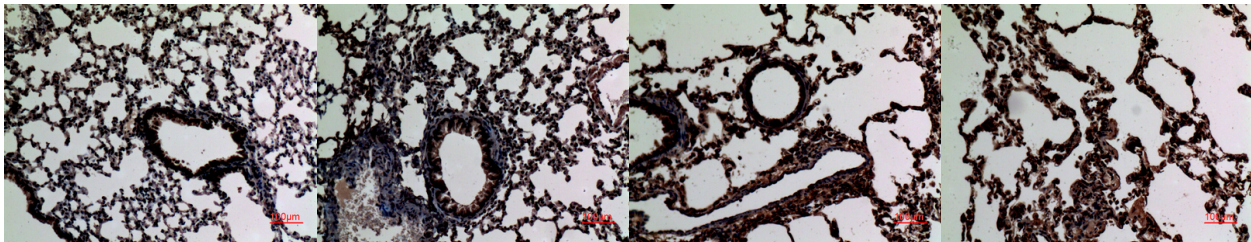
Product Type	Primary antibodies
Short Description	Rabbit polyclonal antibody anti-Signal Transducer And Activator Of Transcription 2 (570-650) is suitable for use in Western Blot, Immunohistochemistry, Immunofluorescence and ELISA research applications.
Applications	WB, IHC-P, IF-P, ELISA
Host/Source	Rabbit
Reactivity	Human, Mouse, Rat

PRODUCT PROPERTIES

Clonality	Polyclonal
Clone ID	
Concentration	1 mg/mL
Conjugation	Unconjugated
Purification	The antibody was affinity-purified from rabbit anti-serum by affinity-chromatography.
Dilution Range	WB 1:500-1:2000 IHC 1:100-300 ELISA 1:10000
Formulation	PBS, 50% Glycerol, 0.5% BSA and 0.02% Sodium Azide.
Isotype	IgG
Storage Instruction	Store at -20°C for up to 1 year from the date of receipt, and avoid repeat freeze-thaw cycles.

TARGET INFORMATION

Gene ID	6773
Gene Symbol	STAT2
Uniprot ID	STAT2_HUMAN
Immunogen	Synthesized peptide derived from Stat2. at amino acid range: 570-650
Immunogen Region	570-650
Specificity	STAT2 polyclonal antibody (Signal Transducer And Activator Of Transcription 2) binds to endogenous Signal Transducer And Activator Of Transcription 2 at the amino acid region 570-650.
Immunogen Sequence	



Immunohistochemical analysis of paraffin-embedded mouse-lung, antibody was diluted at 1:100

Immunohistochemical analysis of paraffin-embedded mouse-lung, antibody was diluted at 1:100

Immunohistochemical analysis of paraffin-embedded rat-lung, antibody was diluted at 1:100

Immunohistochemical analysis of paraffin-embedded rat-lung, antibody was diluted at 1:100

This product is suitable for in-vitro studies under the RESEARCH USE ONLY [RUO] licence. This product must not be used as for diagnostic or other medical purposes.
St John's Laboratory Ltd, Knowledge Dock Business Centre, University Way, London, E16 2RD | Tel: 0208 223 3081