

Anti-TOP2A antibody (1160-1240) (STJ96414)

STJ96414

GENERAL INFORMATION

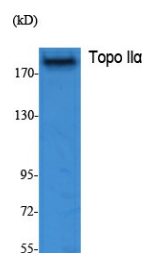
Product Type	Primary antibodies
Short Description	Rabbit polyclonal antibody anti-Dna Topoisomerase 2-Alpha (1160-1240) is suitable for use in Western Blot, Immunohistochemistry, Immunofluorescence and ELISA research applications.
Applications	WB, IHC-P, IF-P, ELISA
Host/Source	Rabbit
Reactivity	Human, Mouse

PRODUCT PROPERTIES

Clonality	Polyclonal
Clone ID	
Concentration	1 mg/mL
Conjugation	Unconjugated
Purification	The antibody was affinity-purified from rabbit anti-serum by affinity-chromatography.
Dilution Range	WB 1:500-1:2000 ELISA 1:5000
Formulation	PBS, 50% Glycerol, 0.5% BSA and 0.02% Sodium Azide.
Isotype	IgG
Storage	Store at -20°C for up to 1 year from the date of receipt, and avoid repeat freeze-thaw cycles.
Instruction	

TARGET INFORMATION

Gene ID	7153
Gene Symbol	TOP2A
Uniprot ID	TOP2A_HUMAN
Immunogen	Synthesized peptide derived from Topo II Alpha. at amino acid range: 1160-1240
Immunogen Region	1160-1240
Specificity	TOP2A polyclonal antibody (Dna Topoisomerase 2-Alpha) binds to endogenous Dna Topoisomerase 2-Alpha at the amino acid region 1160-1240.
Immunogen Sequence	



Western blot analysis of extracts from K562 cells, using Topo II Alpha Polyclonal Antibody. Secondary antibody was diluted at 1:20000

This product is suitable for in-vitro studies under the RESEARCH USE ONLY [RUO] licence. This product must not be used as for diagnostic or other medical purposes.
St John's Laboratory Ltd, Knowledge Dock Business Centre, University Way, London, E16 2RD | Tel: 0208 223 3081