

Anti-NVL antibody (320-400 Internal) (STJ96412)

STJ96412

GENERAL INFORMATION

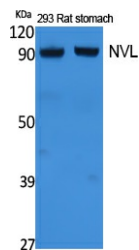
Product Type	Primary antibodies
Short Description	Rabbit polyclonal antibody anti-Nuclear Valosin-Containing Protein-Like (320-400 Internal) is suitable for use in Western Blot and ELISA research applications.
Applications	WB, ELISA
Host/Source	Rabbit
Reactivity	Human, Mouse, Rat

PRODUCT PROPERTIES

Clonality	Polyclonal
Clone ID	
Concentration	1 mg/mL
Conjugation	Unconjugated
Purification	The antibody was affinity-purified from rabbit anti-serum by affinity-chromatography.
Dilution Range	WB 1:500-1:2000 ELISA 1:20000
Formulation	PBS, 50% Glycerol, 0.5% BSA and 0.02% Sodium Azide.
Isotype	IgG
Storage	Store at -20°C for up to 1 year from the date of receipt, and avoid repeat freeze-thaw cycles.
Instruction	

TARGET INFORMATION

Gene ID	4931
Gene Symbol	NVL
Uniprot ID	NVL_HUMAN
Immunogen	Synthesized peptide derived from NVL. at amino acid range: 320-400
Immunogen Region	320-400 Internal
Specificity	NVL polyclonal antibody (Nuclear Valosin-Containing Protein-Like) binds to endogenous Nuclear Valosin-Containing Protein-Like at the amino acid region 320-400 Internal.
Immunogen Sequence	



Western blot analysis of extracts from rat stomach, 293 cells, using NVL Polyclonal Antibody. Secondary antibody was diluted at 1:20000 cells nucleus extracted by Minute™ Cytoplasmic and Nuclear Fractionation kit (SC-003, Inventibiotec, MN, USA).