

Anti-NPAS2 antibody (340-420 Internal) (STJ96410)

STJ96410

GENERAL INFORMATION

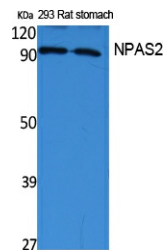
Product Type	Primary antibodies
Short Description	Rabbit polyclonal antibody anti-Neuronal Pas Domain-Containing Protein 2 (340-420 Internal) is suitable for use in Western Blot and ELISA research applications.
Applications	WB, ELISA
Host/Source	Rabbit
Reactivity	Human, Rat

PRODUCT PROPERTIES

Clonality	Polyclonal
Clone ID	
Concentration	1 mg/mL
Conjugation	Unconjugated
Purification	The antibody was affinity-purified from rabbit anti-serum by affinity-chromatography.
Dilution Range	WB 1:500-1:2000 ELISA 1:5000
Formulation	PBS, 50% Glycerol, 0.5% BSA and 0.02% Sodium Azide.
Isotype	IgG
Storage	Store at -20°C for up to 1 year from the date of receipt, and avoid repeat freeze-thaw cycles.
Instruction	

TARGET INFORMATION

Gene ID	4862
Gene Symbol	NPAS2
Uniprot ID	NPAS2_HUMAN
Immunogen	Synthesized peptide derived from NPAS2. at amino acid range: 340-420
Immunogen Region	340-420 Internal
Specificity	NPAS2 polyclonal antibody (Neuronal Pas Domain-Containing Protein 2) binds to endogenous Neuronal Pas Domain-Containing Protein 2 at the amino acid region 340-420 Internal.
Immunogen Sequence	



Western blot analysis of extracts from rat stomach, 293 cells, using NPAS2 Polyclonal Antibody. Secondary antibody was diluted at 1:20000 cells nucleus extracted by Minute TM Cytoplasmic and Nuclear Fractionation kit (SC-003, Inventibiotech, MN, USA).