

Anti-GPM6A antibody (140-220 Internal) (STJ96409)

STJ96409

GENERAL INFORMATION

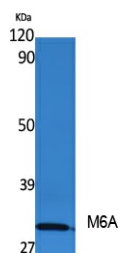
Product Type	Primary antibodies
Short Description	Rabbit polyclonal antibody anti-Neuronal Membrane Glycoprotein M6-A (140-220 Internal) is suitable for use in Western Blot and ELISA research applications.
Applications	WB, ELISA
Host/Source	Rabbit
Reactivity	Human, Mouse, Rat

PRODUCT PROPERTIES

Clonality	Polyclonal
Clone ID	
Concentration	1 mg/mL
Conjugation	Unconjugated
Purification	The antibody was affinity-purified from rabbit anti-serum by affinity-chromatography.
Dilution Range	WB 1:500-1:2000 ELISA 1:5000
Formulation	PBS, 50% Glycerol, 0.5% BSA and 0.02% Sodium Azide.
Isotype	IgG
Storage	Store at -20°C for up to 1 year from the date of receipt, and avoid repeat freeze-thaw cycles.
Instruction	

TARGET INFORMATION

Gene ID	2823
Gene Symbol	GPM6A
Uniprot ID	GPM6A_HUMAN
Immunogen	Synthesized peptide derived from M6A. at amino acid range: 140-220
Immunogen Region	140-220 Internal
Specificity	GPM6A polyclonal antibody (Neuronal Membrane Glycoprotein M6-A) binds to endogenous Neuronal Membrane Glycoprotein M6-A at the amino acid region 140-220 Internal.
Immunogen Sequence	



Western blot analysis of extracts from rat stomach, using M6A Polyclonal Antibody. Secondary antibody was diluted at 1:20000

This product is suitable for in-vitro studies under the RESEARCH USE ONLY [RUO] licence. This product must not be used as for diagnostic or other medical purposes.
St John's Laboratory Ltd, Knowledge Dock Business Centre, University Way, London, E16 2RD | Tel: 0208 223 3081