

Anti-SMARCA2 antibody (Internal) (STJ96404)

STJ96404

GENERAL INFORMATION

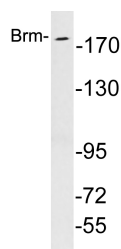
Product Type	Primary antibodies
Short Description	Rabbit polyclonal antibody anti-Probable Global Transcription Activator Snf2l2 (Internal) is suitable for use in Western Blot and ELISA research applications.
Applications	WB, ELISA
Host/Source	Rabbit
Reactivity	Human, Mouse, Rat

PRODUCT PROPERTIES

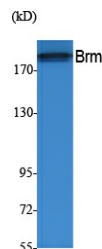
Clonality	Polyclonal
Clone ID	
Concentration	1 mg/mL
Conjugation	Unconjugated
Purification	The antibody was affinity-purified from rabbit anti-serum by affinity-chromatography.
Dilution Range	WB 1:500-1:2000 ELISA 1:20000
Formulation	PBS, 50% Glycerol, 0.5% BSA and 0.02% Sodium Azide.
Isotype	IgG
Storage	Store at -20°C for up to 1 year from the date of receipt, and avoid repeat freeze-thaw cycles.
Instruction	

TARGET INFORMATION

Gene ID	6595
Gene Symbol	SMARCA2
Uniprot ID	SMCA2_HUMAN
Immunogen	The antiserum was produced against synthesized peptide derived from human Brm at amino acid range 1328-1377
Immunogen Region	Internal
Specificity	SMARCA2 polyclonal antibody (Probable Global Transcription Activator Snf2l2) binds to endogenous Probable Global Transcription Activator Snf2l2 at the amino acid region Internal.
Immunogen Sequence	



Western blot analysis of lysates from K562 cells, using Brm antibody.



Western blot analysis of extracts from A549 cells, using Brm Polyclonal Antibody. Secondary antibody was diluted at 1:20000 cells nucleus extracted by Minute™ Cytoplasmic and Nuclear Fractionation Kit (SC-003, Inventibiotech, MN, USA).

This product is suitable for in-vitro studies under the RESEARCH USE ONLY [RUO] licence. This product must not be used as for diagnostic or other medical purposes.
St John's Laboratory Ltd, Knowledge Dock Business Centre, University Way, London, E16 2RD | Tel: 0208 223 3081