

Anti-ING4 antibody (Internal) (STJ96402)

STJ96402

GENERAL INFORMATION

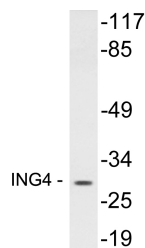
Product Type	Primary antibodies
Short Description	Rabbit polyclonal antibody anti-Inhibitor Of Growth Protein 4 (Internal) is suitable for use in Western Blot and ELISA research applications.
Applications	WB, ELISA
Host/Source	Rabbit
Reactivity	Human, Mouse, Rat

PRODUCT PROPERTIES

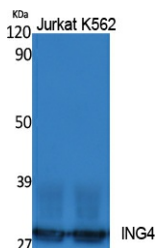
Clonality	Polyclonal
Clone ID	
Concentration	1 mg/mL
Conjugation	Unconjugated
Purification	The antibody was affinity-purified from rabbit anti-serum by affinity-chromatography.
Dilution Range	WB 1:500-1:2000 ELISA 1:20000
Formulation	PBS, 50% Glycerol, 0.5% BSA and 0.02% Sodium Azide.
Isotype	IgG
Storage Instruction	Store at -20°C for up to 1 year from the date of receipt, and avoid repeat freeze-thaw cycles.

TARGET INFORMATION

Gene ID	51147
Gene Symbol	ING4
Uniprot ID	ING4_HUMAN
Immunogen	The antiserum was produced against synthesized peptide derived from human ING4 at amino acid range 107-156
Immunogen Region	Internal
Specificity	ING4 polyclonal antibody (Inhibitor Of Growth Protein 4) binds to endogenous Inhibitor Of Growth Protein 4 at the amino acid region Internal.
Immunogen Sequence	



Western blot analysis of lysates from 293 cells, using ING4 antibody.



Western blot analysis of extracts from Jurkat, K562 cells, using ING4 Polyclonal Antibody. Secondary antibody was diluted at 1:20000 cells nucleus extracted by Minute™ Cytoplasmic and Nuclear Fractionation kit (SC-003, Inventibiotech, MN, USA).

This product is suitable for in-vitro studies under the RESEARCH USE ONLY [RUO] licence. This product must not be used as for diagnostic or other medical purposes.
St John's Laboratory Ltd, Knowledge Dock Business Centre, University Way, London, E16 2RD | Tel: 0208 223 3081