

Anti-ILF3 antibody (Internal) (STJ96401)

STJ96401

GENERAL INFORMATION

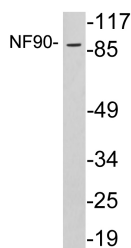
Product Type	Primary antibodies
Short Description	Rabbit polyclonal antibody anti-Interleukin Enhancer-Binding Factor 3 (Internal) is suitable for use in Western Blot and ELISA research applications.
Applications	WB, ELISA
Host/Source	Rabbit
Reactivity	Human, Mouse, Rat

PRODUCT PROPERTIES

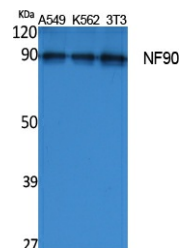
Clonality	Polyclonal
Clone ID	
Concentration	1 mg/mL
Conjugation	Unconjugated
Purification	The antibody was affinity-purified from rabbit anti-serum by affinity-chromatography.
Dilution Range	WB 1:500-1:2000 ELISA 1:20000
Formulation	PBS, 50% Glycerol, 0.5% BSA and 0.02% Sodium Azide.
Isotype	IgG
Storage	Store at -20°C for up to 1 year from the date of receipt, and avoid repeat freeze-thaw cycles.
Instruction	

TARGET INFORMATION

Gene ID	3609
Gene Symbol	ILF3
Uniprot ID	ILF3_HUMAN
Immunogen	The antiserum was produced against synthesized peptide derived from human NF90 at amino acid range 302-351
Immunogen Region	Internal
Specificity	ILF3 polyclonal antibody (Interleukin Enhancer-Binding Factor 3) binds to endogenous Interleukin Enhancer-Binding Factor 3 at the amino acid region Internal.
Immunogen Sequence	



Western blot analysis of lysates from HeLa cells, using NF90 antibody.



Western blot analysis of extracts from A549, K562, NIH-3T3 cells, using NF90 Polyclonal Antibody. Secondary antibody was diluted at 1:20000