

Anti-GLUL antibody (Internal) (STJ96400)

STJ96400

GENERAL INFORMATION

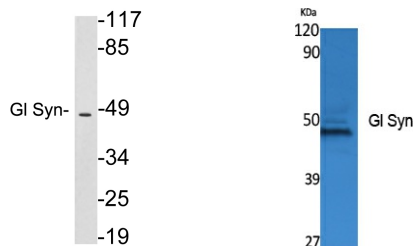
Product Type	Primary antibodies
Short Description	Rabbit polyclonal antibody anti-Glutamine Synthetase (Internal) is suitable for use in Western Blot and ELISA research applications.
Applications	WB, ELISA
Host/Source	Rabbit
Reactivity	Human, Mouse, Rat

PRODUCT PROPERTIES

Clonality	Polyclonal
Clone ID	
Concentration	1 mg/mL
Conjugation	Unconjugated
Purification	The antibody was affinity-purified from rabbit anti-serum by affinity-chromatography.
Dilution Range	WB 1:500-1:2000 ELISA 1:20000
Formulation	PBS, 50% Glycerol, 0.5% BSA and 0.02% Sodium Azide.
Isotype	IgG
Storage Instruction	Store at -20°C for up to 1 year from the date of receipt, and avoid repeat freeze-thaw cycles.

TARGET INFORMATION

Gene ID	2752
Gene Symbol	GLUL
Uniprot ID	GLNA_HUMAN
Immunogen	The antiserum was produced against synthesized peptide derived from human GI Syn at amino acid range 295-344
Immunogen Region	Internal
Specificity	GLUL polyclonal antibody (Glutamine Synthetase) binds to endogenous Glutamine Synthetase at the amino acid region Internal.
Immunogen Sequence	



Western blot analysis of lysates from HepG2 cells, using GI Syn antibody.

Western blot analysis of extracts from K562 cells, using GI Syn Polyclonal Antibody. Secondary antibody was diluted at 1:20000

This product is suitable for in-vitro studies under the RESEARCH USE ONLY [RUO] licence. This product must not be used as for diagnostic or other medical purposes.
St John's Laboratory Ltd, Knowledge Dock Business Centre, University Way, London, E16 2RD | Tel: 0208 223 3081