

Anti-GDI1 antibody (C-Term) (STJ96399)

STJ96399

GENERAL INFORMATION

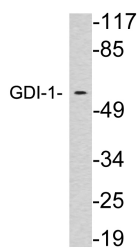
Product Type	Primary antibodies
Short Description	Rabbit polyclonal antibody anti-Rab Gdp Dissociation Inhibitor Alpha (C-Term) is suitable for use in Western Blot and ELISA research applications.
Applications	WB, ELISA
Host/Source	Rabbit
Reactivity	Human, Mouse, Rat

PRODUCT PROPERTIES

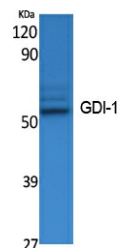
Clonality	Polyclonal
Clone ID	
Concentration	1 mg/mL
Conjugation	Unconjugated
Purification	The antibody was affinity-purified from rabbit anti-serum by affinity-chromatography.
Dilution Range	WB 1:500-1:2000 ELISA 1:20000
Formulation	PBS, 50% Glycerol, 0.5% BSA and 0.02% Sodium Azide.
Isotype	IgG
Storage	Store at -20°C for up to 1 year from the date of receipt, and avoid repeat freeze-thaw cycles.
Instruction	

TARGET INFORMATION

Gene ID	2664
Gene Symbol	GDI1
Uniprot ID	GDI1_HUMAN
Immunogen	The antiserum was produced against synthesized peptide derived from human GDI-1 at amino acid range 394-443
Immunogen Region	C-Term
Specificity	GDI1 polyclonal antibody (Rab Gdp Dissociation Inhibitor Alpha) binds to endogenous Rab Gdp Dissociation Inhibitor Alpha at the amino acid region C-Term.
Immunogen Sequence	



Western blot analysis of lysates from brain tissue, using GDI-1 antibody.



Western blot analysis of extracts from K562 cells, using GDI-1 Polyclonal Antibody. Secondary antibody was diluted at 1:20000