

Anti-CHD1L antibody (Internal) (STJ96392)

STJ96392

GENERAL INFORMATION

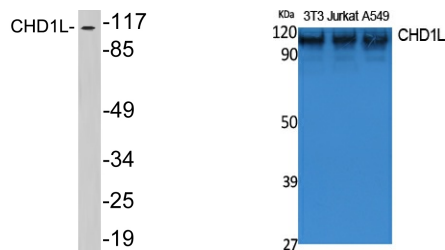
Product Type	Primary antibodies
Short Description	Rabbit polyclonal antibody anti-Chromodomain-Helicase-Dna-Binding Protein 1-Like (Internal) is suitable for use in Western Blot and ELISA research applications.
Applications	WB, ELISA
Host/Source	Rabbit
Reactivity	Human, Mouse

PRODUCT PROPERTIES

Clonality	Polyclonal
Clone ID	
Concentration	1 mg/mL
Conjugation	Unconjugated
Purification	The antibody was affinity-purified from rabbit anti-serum by affinity-chromatography.
Dilution Range	WB 1:500-1:2000 ELISA 1:20000
Formulation	PBS, 50% Glycerol, 0.5% BSA and 0.02% Sodium Azide.
Isotype	IgG
Storage Instruction	Store at -20°C for up to 1 year from the date of receipt, and avoid repeat freeze-thaw cycles.

TARGET INFORMATION

Gene ID	9557
Gene Symbol	CHD1L
Uniprot ID	CHD1L_HUMAN
Immunogen	The antiserum was produced against synthesized peptide derived from human CHD1L at amino acid range 545-594
Immunogen Region	Internal
Specificity	CHD1L polyclonal antibody (Chromodomain-Helicase-Dna-Binding Protein 1-Like) binds to endogenous Chromodomain-Helicase-Dna-Binding Protein 1-Like at the amino acid region Internal.
Immunogen Sequence	



This product is suitable for in-vitro studies under the RESEARCH USE ONLY [RUO] licence. This product must not be used as for diagnostic or other medical purposes.
 St John's Laboratory Ltd, Knowledge Dock Business Centre, University Way, London, E16 2RD | Tel: 0208 223 3081