

Anti-ACADM antibody (Internal) (STJ96389)

STJ96389

GENERAL INFORMATION

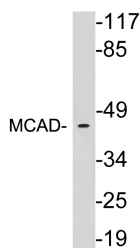
Product Type	Primary antibodies
Short Description	Rabbit polyclonal antibody anti-Medium-Chain Specific Acyl-Coa Dehydrogenase-Mitochondrial (Internal) is suitable for use in Western Blot and ELISA research applications.
Applications	WB, ELISA
Host/Source	Rabbit
Reactivity	Human, Mouse, Rat

PRODUCT PROPERTIES

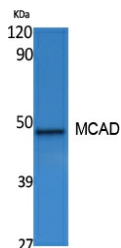
Clonality	Polyclonal
Clone ID	
Concentration	1 mg/mL
Conjugation	Unconjugated
Purification	The antibody was affinity-purified from rabbit anti-serum by affinity-chromatography.
Dilution	WB 1:500-1:2000
Range	ELISA 1:20000
Formulation	PBS, 50% Glycerol, 0.5% BSA and 0.02% Sodium Azide.
Isotype	IgG
Storage	Store at -20°C for up to 1 year from the date of receipt, and avoid repeat freeze-thaw cycles.
Instruction	

TARGET INFORMATION

Gene ID	34
Gene Symbol	ACADM
Uniprot ID	ACADM_HUMAN
Immunogen	The antiserum was produced against synthesized peptide derived from human MCAD at amino acid range 134-183
Immunogen Region	Internal
Specificity	ACADM polyclonal antibody (Medium-Chain Specific Acyl-Coa Dehydrogenase-Mitochondrial) binds to endogenous Medium-Chain Specific Acyl-Coa Dehydrogenase-Mitochondrial at the amino acid region Internal.
Immunogen Sequence	



Western blot analysis of lysates from HeLa cells, using MCAD antibody.



Western blot analysis of extracts from A549 cells, using MCAD Polyclonal Antibody. Secondary antibody was diluted at 1:20000