

Anti-CHAF1A antibody (300-380 Internal) (STJ96382)

STJ96382

GENERAL INFORMATION

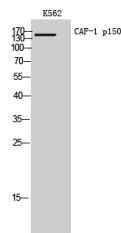
Product Type	Primary antibodies
Short Description	Rabbit polyclonal antibody anti-Chromatin Assembly Factor 1 Subunit A (300-380 Internal) is suitable for use in Western Blot and ELISA research applications.
Applications	WB, ELISA
Host/Source	Rabbit
Reactivity	Human, Mouse

PRODUCT PROPERTIES

Clonality	Polyclonal
Clone ID	
Concentration	1 mg/mL
Conjugation	Unconjugated
Purification	The antibody was affinity-purified from rabbit anti-serum by affinity-chromatography.
Dilution Range	WB 1:500-1:2000 ELISA 1:10000
Formulation	PBS, 50% Glycerol, 0.5% BSA and 0.02% Sodium Azide.
Isotype	IgG
Storage	Store at -20°C for up to 1 year from the date of receipt, and avoid repeat freeze-thaw cycles.
Instruction	

TARGET INFORMATION

Gene ID	10036
Gene Symbol	CHAF1A
Uniprot ID	CAF1A_HUMAN
Immunogen	Synthesized peptide derived from CAF-1 p150. at amino acid range: 300-380
Immunogen Region	300-380 Internal
Specificity	CHAF1A polyclonal antibody (Chromatin Assembly Factor 1 Subunit A) binds to endogenous Chromatin Assembly Factor 1 Subunit A at the amino acid region 300-380 Internal.
Immunogen Sequence	



Western blot analysis of K562 cells using CAF-1 p150 Polyclonal Antibody. Secondary antibody was diluted at 1:20000 cells nucleus extracted by Minute™ Cytoplasmic and Nuclear Fractionation kit (SC-003, InventiBiotech, MN, USA).

This product is suitable for in-vitro studies under the RESEARCH USE ONLY [RUO] licence. This product must not be used as for diagnostic or other medical purposes.
St John's Laboratory Ltd, Knowledge Dock Business Centre, University Way, London, E16 2RD | Tel: 0208 223 3081