

Anti-B4GALT3 antibody (240-320 Internal) (STJ96374)

STJ96374

GENERAL INFORMATION

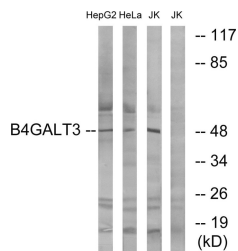
Product Type	Primary antibodies
Short Description	Rabbit polyclonal antibody anti-Beta-1-4-Galactosyltransferase 3 (240-320 Internal) is suitable for use in Western Blot, Immunohistochemistry, Immunofluorescence and ELISA research applications.
Applications	WB, IHC-P, IF-P, ELISA
Host/Source	Rabbit
Reactivity	Human, Mouse, Rat

PRODUCT PROPERTIES

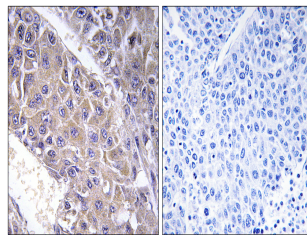
Clonality	Polyclonal
Clone ID	
Concentration	1 mg/mL
Conjugation	Unconjugated
Purification	The antibody was affinity-purified from rabbit anti-serum by affinity-chromatography.
Dilution Range	WB 1:500-1:2000 IHC 1:100-1:300 ELISA 1:40000
Formulation	PBS, 50% Glycerol, 0.5% BSA and 0.02% Sodium Azide.
Isotype	IgG
Storage Instruction	Store at -20°C for up to 1 year from the date of receipt, and avoid repeat freeze-thaw cycles.

TARGET INFORMATION

Gene ID	8703
Gene Symbol	B4GALT3
Uniprot ID	B4GT3_HUMAN
Immunogen	The antiserum was produced against synthesized peptide derived from human B4GALT3 at amino acid range 271-320
Immunogen Region	240-320 Internal
Specificity	B4GALT3 polyclonal antibody (Beta-1-4-Galactosyltransferase 3) binds to endogenous Beta-1-4-Galactosyltransferase 3 at the amino acid region 240-320 Internal.
Immunogen Sequence	



Western blot analysis of lysates from Jurkat, HeLa, and HepG2 cells, using B4GALT3 Antibody. The lane on the right is blocked with the synthesized peptide.



Immunohistochemistry analysis of paraffin-embedded human liver carcinoma tissue, using B4GALT3 Antibody. The picture on the right is blocked with the synthesized peptide.