

Anti-B3GALT1 antibody (30-110 Internal) (STJ96367)

STJ96367

GENERAL INFORMATION

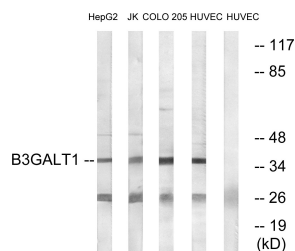
Product Type	Primary antibodies
Short Description	Rabbit polyclonal antibody anti-Beta-1-3-Galactosyltransferase 1 (30-110 Internal) is suitable for use in Western Blot and ELISA research applications.
Applications	WB, ELISA
Host/Source	Rabbit
Reactivity	Human, Mouse

PRODUCT PROPERTIES

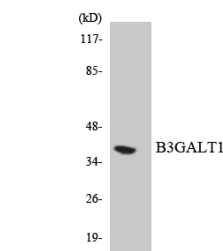
Clonality	Polyclonal
Clone ID	
Concentration	1 mg/mL
Conjugation	Unconjugated
Purification	The antibody was affinity-purified from rabbit anti-serum by affinity-chromatography.
Dilution Range	WB 1:500-1:2000 ELISA 1:20000
Formulation	PBS, 50% Glycerol, 0.5% BSA and 0.02% Sodium Azide.
Isotype	IgG
Storage	Store at -20°C for up to 1 year from the date of receipt, and avoid repeat freeze-thaw cycles.
Instruction	

TARGET INFORMATION

Gene ID	8708
Gene Symbol	B3GALT1
Uniprot ID	B3GT1_HUMAN
Immunogen	The antiserum was produced against synthesized peptide derived from human B3GALT1 at amino acid range 61-110
Immunogen Region	30-110 Internal
Specificity	B3GALT1 polyclonal antibody (Beta-1-3-Galactosyltransferase 1) binds to endogenous Beta-1-3-Galactosyltransferase 1 at the amino acid region 30-110 Internal.
Immunogen Sequence	



Western blot analysis of lysates from HUVEC, COLO, Jurkat, and HepG2 cells, using B3GALT1 Antibody. The lane on the right is blocked with the synthesized peptide.



Western blot analysis of the lysates from HUVEC cells using B3GALT1 antibody.



Western blot analysis of various cells using Beta-1, 3-Gal-T1 Polyclonal Antibody. Secondary antibody was diluted at 1:20000

This product is suitable for in-vitro studies under the RESEARCH USE ONLY [RUO] licence. This product must not be used as for diagnostic or other medical purposes.
St John's Laboratory Ltd, Knowledge Dock Business Centre, University Way, London, E16 2RD | Tel: 0208 223 3081