

Anti-ALPK1 antibody (30-110 N-Term) (STJ96366)

STJ96366

GENERAL INFORMATION

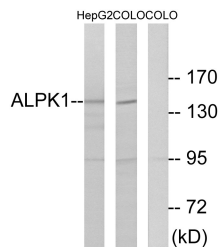
Product Type	Primary antibodies
Short Description	Rabbit polyclonal antibody anti-Alpha-Protein Kinase 1 (30-110 N-Term) is suitable for use in Western Blot, Immunohistochemistry, Immunofluorescence, Immunocytochemistry and ELISA research applications.
Applications	WB, IHC-P, IF, ICC, ELISA
Host/Source	Rabbit
Reactivity	Human, Mouse

PRODUCT PROPERTIES

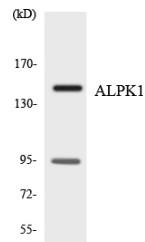
Clonality	Polyclonal
Clone ID	
Concentration	1 mg/mL
Conjugation	Unconjugated
Purification	The antibody was affinity-purified from rabbit anti-serum by affinity-chromatography.
Dilution Range	WB 1:500-1:2000 IHC 1:100-1:300 IF 1:200-1:1000 ELISA 1:20000
Formulation	PBS, 50% Glycerol, 0.5% BSA and 0.02% Sodium Azide.
Isotype	IgG
Storage Instruction	Store at -20°C for up to 1 year from the date of receipt, and avoid repeat freeze-thaw cycles.

TARGET INFORMATION

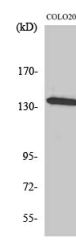
Gene ID	80216
Gene Symbol	ALPK1
Uniprot ID	ALPK1_HUMAN
Immunogen	The antiserum was produced against synthesized peptide derived from human ALPK1 at amino acid range 11-60
Immunogen Region	30-110 N-Term
Specificity	ALPK1 polyclonal antibody (Alpha-Protein Kinase 1) binds to endogenous Alpha-Protein Kinase 1 at the amino acid region 30-110 N-Term.
Immunogen Sequence	



Western blot analysis of lysates from COLO and HepG2 cells, using ALPK1 Antibody. The lane on the right is blocked with the synthesized peptide.



Western blot analysis of the lysates from 293 cells using ALPK1 antibody.



Western blot analysis of various cells using Alpha-protein Kinase 1 Polyclonal Antibody. Secondary antibody was diluted at 1:20000.

This product is suitable for in-vitro studies under the RESEARCH USE ONLY [RUO] licence. This product must not be used as for diagnostic or other medical purposes.
St John's Laboratory Ltd, Knowledge Dock Business Centre, University Way, London, E16 2RD | Tel: 0208 223 3081