

## Anti-ZZZ3 antibody (310-390 Internal) (STJ96364)

STJ96364

### GENERAL INFORMATION

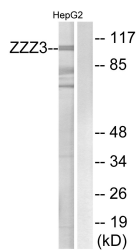
<b>Product Type</b>	Primary antibodies
<b>Short Description</b>	Rabbit polyclonal antibody anti-Zz-Type Zinc Finger-Containing Protein 3 (310-390 Internal) is suitable for use in Western Blot and ELISA research applications.
<b>Applications</b>	WB, ELISA
<b>Host/Source</b>	Rabbit
<b>Reactivity</b>	Human, Mouse, Rat

### PRODUCT PROPERTIES

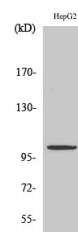
<b>Clonality</b>	Polyclonal
<b>Clone ID</b>	
<b>Concentration</b>	1 mg/mL
<b>Conjugation</b>	Unconjugated
<b>Purification</b>	The antibody was affinity-purified from rabbit anti-serum by affinity-chromatography.
<b>Dilution Range</b>	WB 1:500-1:2000 ELISA 1:5000
<b>Formulation</b>	PBS, 50% Glycerol, 0.5% BSA and 0.02% Sodium Azide.
<b>Isotype</b>	IgG
<b>Storage</b>	Store at -20°C for up to 1 year from the date of receipt, and avoid repeat freeze-thaw cycles.
<b>Instruction</b>	

### TARGET INFORMATION

<b>Gene ID</b>	26009
<b>Gene Symbol</b>	ZZZ3
<b>Uniprot ID</b>	ZZZ3_HUMAN
<b>Immunogen</b>	The antiserum was produced against synthesized peptide derived from human ZZZ3 at amino acid range 341-390
<b>Immunogen Region</b>	310-390 Internal
<b>Specificity</b>	ZZZ3 polyclonal antibody (Zz-Type Zinc Finger-Containing Protein 3) binds to endogenous Zz-Type Zinc Finger-Containing Protein 3 at the amino acid region 310-390 Internal.
<b>Immunogen Sequence</b>	



Western blot analysis of lysates from HepG2 cells, using ZZZ3 Antibody. The lane on the right is blocked with the synthesized peptide.



Western blot analysis of various cells using ZZZ3 Polyclonal Antibody. Secondary antibody was diluted at 1:20000 cells nucleus extracted by Minute™ Cytoplasmic and Nuclear Fractionation kit (SC-003, InventiBiotech, MN, USA).

This product is suitable for in-vitro studies under the RESEARCH USE ONLY [RUO] licence. This product must not be used as for diagnostic or other medical purposes.  
St John's Laboratory Ltd, Knowledge Dock Business Centre, University Way, London, E16 2RD | Tel: 0208 223 3081