

Anti-ZSCAN22 antibody (290-370 Internal) (STJ96363)

STJ96363

GENERAL INFORMATION

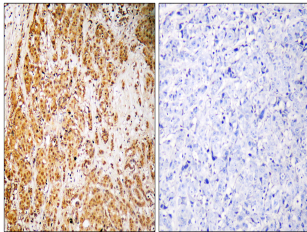
Product Type	Primary antibodies
Short Description	Rabbit polyclonal antibody anti-Zinc Finger And Scan Domain-Containing Protein 22 (290-370 Internal) is suitable for use in Western Blot, Immunohistochemistry, Immunofluorescence and ELISA research applications.
Applications	WB, IHC-P, IF-P, ELISA
Host/Source	Rabbit
Reactivity	Human, Rat, Mouse

PRODUCT PROPERTIES

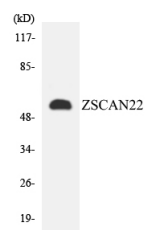
Clonality	Polyclonal
Clone ID	
Concentration	1 mg/mL
Conjugation	Unconjugated
Purification	The antibody was affinity-purified from rabbit anti-serum by affinity-chromatography.
Dilution Range	WB 1:500-1:2000 IHC 1:100-1:300 ELISA 1:10000
Formulation	PBS, 50% Glycerol, 0.5% BSA and 0.02% Sodium Azide.
Isotype	IgG
Storage Instruction	Store at -20°C for up to 1 year from the date of receipt, and avoid repeat freeze-thaw cycles.

TARGET INFORMATION

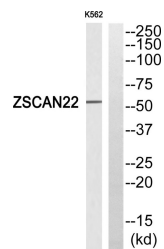
Gene ID	342945
Gene Symbol	ZSCAN22
Uniprot ID	ZSC22_HUMAN
Immunogen	The antiserum was produced against synthesized peptide derived from human ZSCAN22 at amino acid range 321-370
Immunogen Region	290-370 Internal
Specificity	ZSCAN22 polyclonal antibody (Zinc Finger And Scan Domain-Containing Protein 22) binds to endogenous Zinc Finger And Scan Domain-Containing Protein 22 at the amino acid region 290-370 Internal.
Immunogen Sequence	



Immunohistochemistry analysis of paraffin-embedded human brain, using ZSCAN22 Antibody. The lane on the right is blocked with the ZSCAN22 peptide.



Western blot analysis of the lysates from HepG2 cells using ZSCAN22 antibody.



Western blot analysis of ZSCAN22 Antibody. The lane on the right is blocked with the ZSCAN22 peptide.

This product is suitable for in-vitro studies under the RESEARCH USE ONLY [RUO] licence. This product must not be used as for diagnostic or other medical purposes.
 St John's Laboratory Ltd, Knowledge Dock Business Centre, University Way, London, E16 2RD | Tel: 0208 223 3081