

Anti-ZSCAN16 antibody (160-240 Internal) (STJ96362)

STJ96362

GENERAL INFORMATION

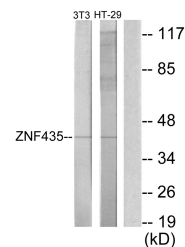
Product Type	Primary antibodies
Short Description	Rabbit polyclonal antibody anti-Zinc Finger And Scan Domain-Containing Protein 16 (160-240 Internal) is suitable for use in Western Blot, Immunohistochemistry, Immunofluorescence, Immunocytochemistry and ELISA research applications.
Applications	WB, IHC-P, IF, ICC, ELISA
Host/Source	Rabbit
Reactivity	Human, Mouse

PRODUCT PROPERTIES

Clonality	Polyclonal
Clone ID	
Concentration	1 mg/mL
Conjugation	Unconjugated
Purification	The antibody was affinity-purified from rabbit anti-serum by affinity-chromatography.
Dilution Range	WB 1:500-1:2000 IHC 1:100-1:300 IF 1:200-1:1000 ELISA 1:20000
Formulation	PBS, 50% Glycerol, 0.5% BSA and 0.02% Sodium Azide.
Isotype	IgG
Storage Instruction	Store at -20°C for up to 1 year from the date of receipt, and avoid repeat freeze-thaw cycles.

TARGET INFORMATION

Gene ID	80345
Gene Symbol	ZSCAN16
Uniprot ID	ZSC16_HUMAN
Immunogen	The antiserum was produced against synthesized peptide derived from human ZNF435 at amino acid range 191-240
Immunogen Region	160-240 Internal
Specificity	ZSCAN16 polyclonal antibody (Zinc Finger And Scan Domain-Containing Protein 16) binds to endogenous Zinc Finger And Scan Domain-Containing Protein 16 at the amino acid region 160-240 Internal.
Immunogen Sequence	



Western blot analysis of lysates from NIH/3T3 and HT-29 cells, using ZNF435 Antibody. The lane on the right is blocked with the synthesized peptide.

This product is suitable for in-vitro studies under the RESEARCH USE ONLY [RUO] licence. This product must not be used as for diagnostic or other medical purposes.
St John's Laboratory Ltd, Knowledge Dock Business Centre, University Way, London, E16 2RD | Tel: 0208 223 3081