

Anti-ZP4 antibody (200-280 Internal) (STJ96361)

STJ96361

GENERAL INFORMATION

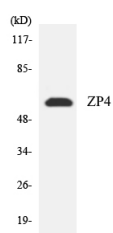
Product Type	Primary antibodies
Short Description	Rabbit polyclonal antibody anti-Zona Pellucida Sperm-Binding Protein 4 (200-280 Internal) is suitable for use in Western Blot and ELISA research applications.
Applications	WB, ELISA
Host/Source	Rabbit
Reactivity	Human, Rat, Mouse

PRODUCT PROPERTIES

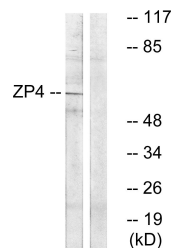
Clonality	Polyclonal
Clone ID	
Concentration	1 mg/mL
Conjugation	Unconjugated
Purification	The antibody was affinity-purified from rabbit anti-serum by affinity-chromatography.
Dilution Range	WB 1:500-1:2000 ELISA 1:10000
Formulation	PBS, 50% Glycerol, 0.5% BSA and 0.02% Sodium Azide.
Isotype	IgG
Storage Instruction	Store at -20°C for up to 1 year from the date of receipt, and avoid repeat freeze-thaw cycles.

TARGET INFORMATION

Gene ID	57829
Gene Symbol	ZP4
Uniprot ID	ZP4_HUMAN
Immunogen	The antiserum was produced against synthesized peptide derived from human ZP4 at amino acid range 231-280
Immunogen Region	200-280 Internal
Specificity	ZP4 polyclonal antibody (Zona Pellucida Sperm-Binding Protein 4) binds to endogenous Zona Pellucida Sperm-Binding Protein 4 at the amino acid region 200-280 Internal.
Immunogen Sequence	



Western blot analysis of the lysates from HepG2 cells using ZP4 antibody.



Western blot analysis of lysates from Jurkat cells, using ZP4 Antibody. The lane on the right is blocked with the synthesized peptide.